

[POWER COMMANDER V]

2012-2014 Arctic Cat Wildcat Fuel and Ignition Controller

Installation Instructions



PARTS LIST

- 1 Power Commander
- 1 USB Cable
- 1 Installation Guide
- 2 Power Commander Decals
- 2 Dynojet Decals
- 2 Velcro Strips
- 1 Alcohol Swab
- 2 Zip Ties

**THE IGNITION MUST BE TURNED
OFF BEFORE INSTALLATION!**

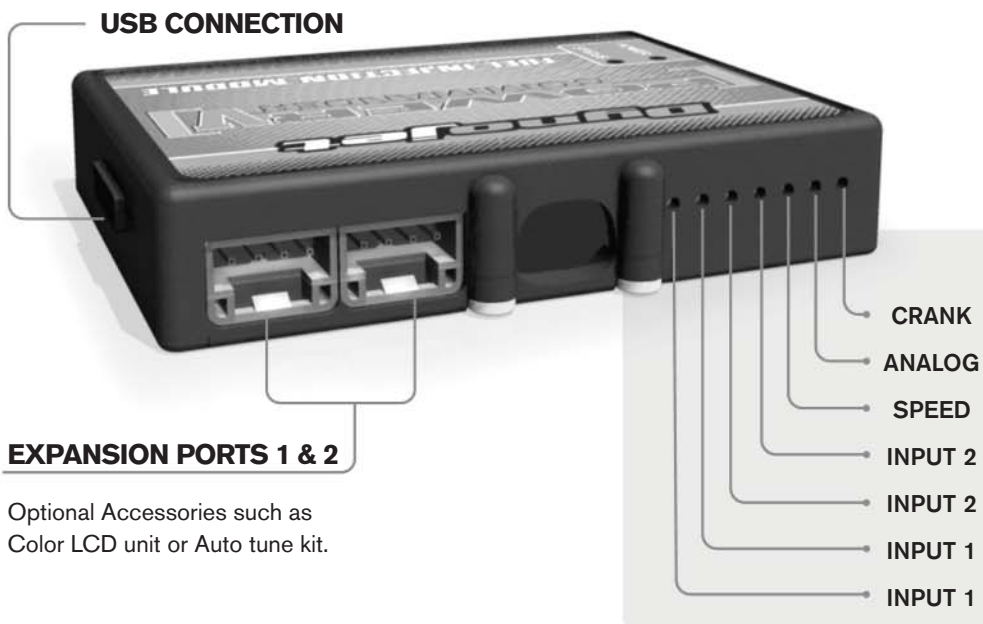
YOU CAN ALSO DOWNLOAD THE
POWER COMMANDER SOFTWARE AND
LATEST MAPS FROM OUR WEB SITE AT:
www.powercommander.com

PLEASE READ ALL DIRECTIONS BEFORE STARTING INSTALLATION

Dynojet

2191 Mendenhall Drive North Las Vegas, NV 89081 (800) 992-4993 www.powercommander.com

POWER COMMANDER V INPUT ACCESSORY GUIDE



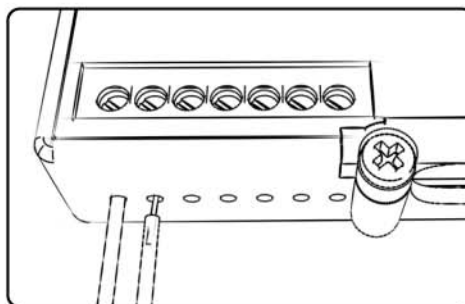
EXPANSION PORTS 1 & 2

Optional Accessories such as
Color LCD unit or Auto tune kit.

Wire connections:

1. Remove the rubber plug on the backside of the unit and loosen the screw for the corresponding input.
2. Using a 22-24 gauge wire, strip about 10mm from its end.
3. Push the wire into the hole of the PCV until it stops and then tighten the screw.
4. Make sure to reinstall the rubber plug.

Note: If you tin the wires with solder it will make inserting them easier.



ACCESSORY INPUTS

Input 1

The PCV has the ability to hold two different base maps. You can switch on the fly between these two base maps when you connect a switch to input 1. You can use any open/close type switch. The polarity of the wires is not important. When using the Autotune kit, one position will hold a base map and the other position will let you activate the learning mode. When the switch is "closed" Autotune will be activated.

Input 2

The function of the switch input is configurable in the Control Center Software. You can use any open/close type switch. The polarity of the wires is not important.

Speed

If your application has a speed sensor, you can tap into the signal side of the sensor and run a wire into this input.

Analog

This input is for a 0-5v signal such as engine temp, boost, etc. Once this input is established you can alter your fuel curve based on this input in the Control Center software.

Crank

Do **NOT** connect anything to this port unless instructed to do so by Dynojet. It is used to transfer crank trigger data from one module to another.



- 1 Remove the drivers seat.
- 2 Remove the panel behind the drivers seat as shown in Figure A.

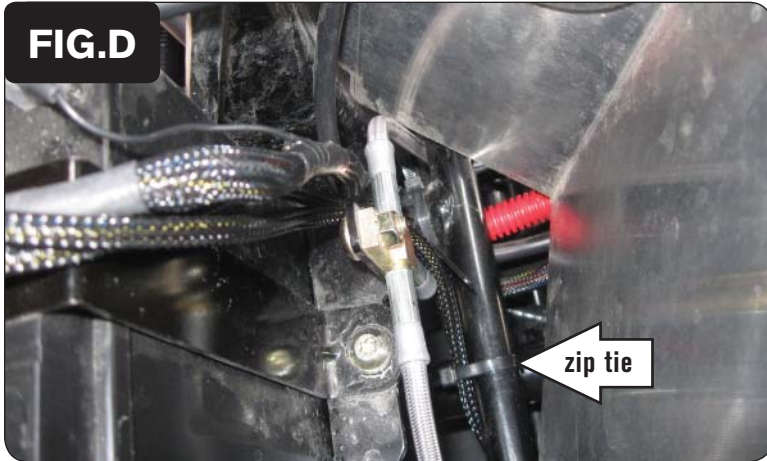


- 3 Remove the cover over the center console as shown in Figure B.



- 4 Using the supplied velcro, secure the PCV to the top of the battery as shown in Figure C.
Make sure to clean both surfaces with the alcohol swab before attaching.
- 5 Attach the ground wire from the PCV harness to the negative side of the battery terminal as shown in Figure C.

FIG.D



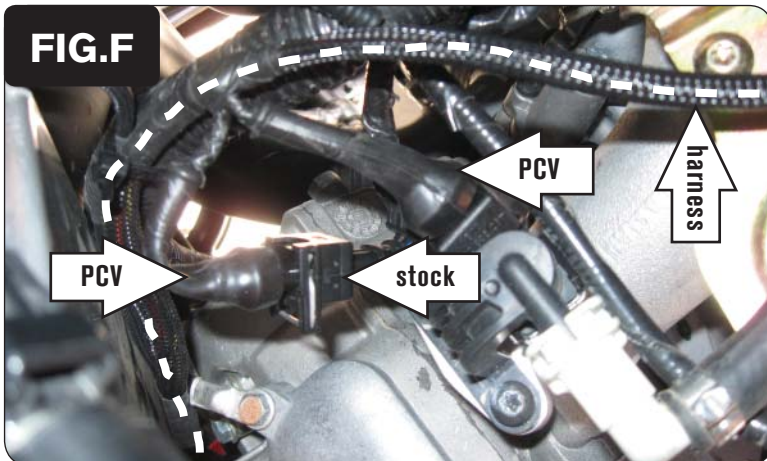
- 6 Route the PCV harness down the back side of the battery, go underneath the frame crossover, and up the inside of the aluminum panel as shown in Figure D.
- 7 Using the supplied zip ties, secure the PCV wiring harness to the frame. Make sure the harness does not interfere with the drive shaft.

FIG.E

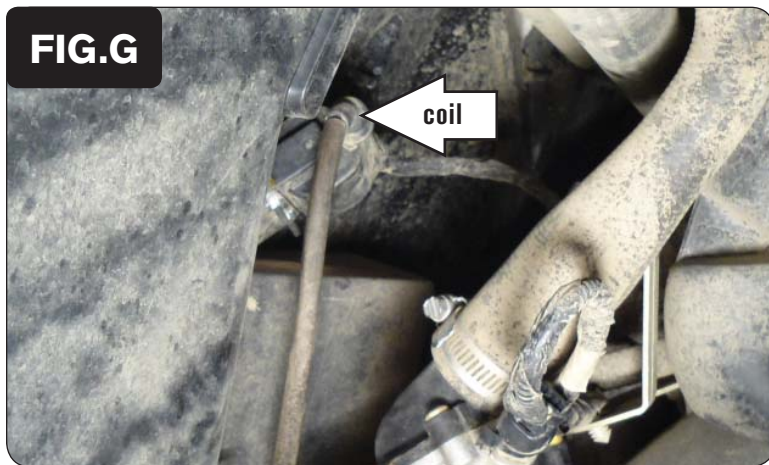


- 8 Unplug the stock wiring harness from the front fuel injector as shown in Figure E.

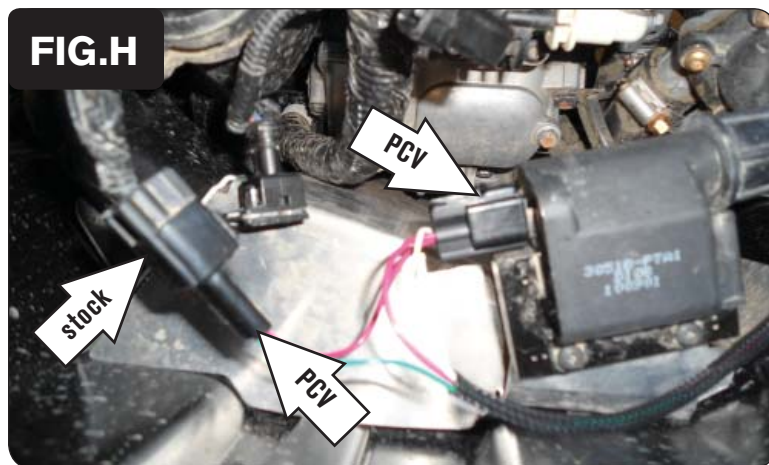
FIG.F



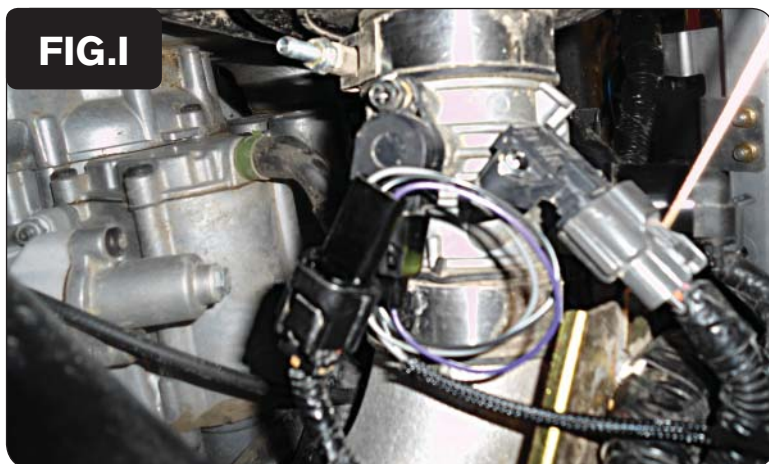
- 9 Attach the connectors with the orange colored wires from the PCV harness to the front fuel injector and stock harness as shown in Figure F.



- 10 Locate the front ignition coil on the rear of the firewall in front of the engine as shown in Figure G.



- 11 Attach the connectors from the PCV harness with the green paired wires to the stock front coil and stock wiring harness as shown in Figure H.



- 12 Unplug the stock wiring harness from the throttle position sensor.
- 13 Attach the connectors from the PCV harness to the stock throttle position sensor and stock harness as shown in Figure I.

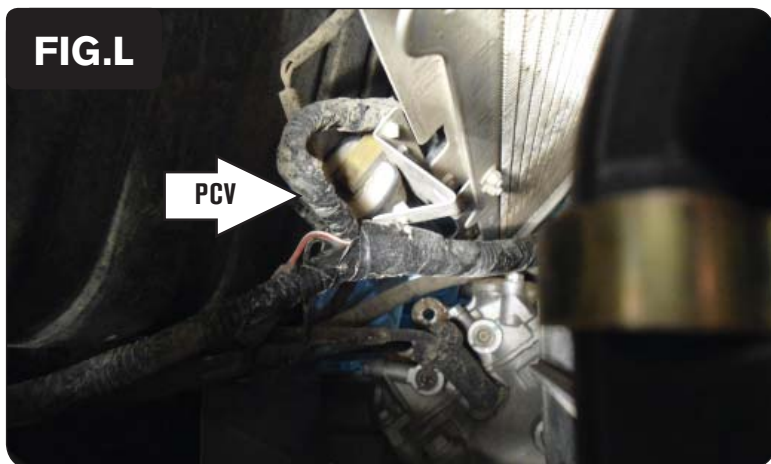
The throttle position sensor connector is difficult to access. Figure I was taken from underneath the vehicle, looking up at the throttle body.



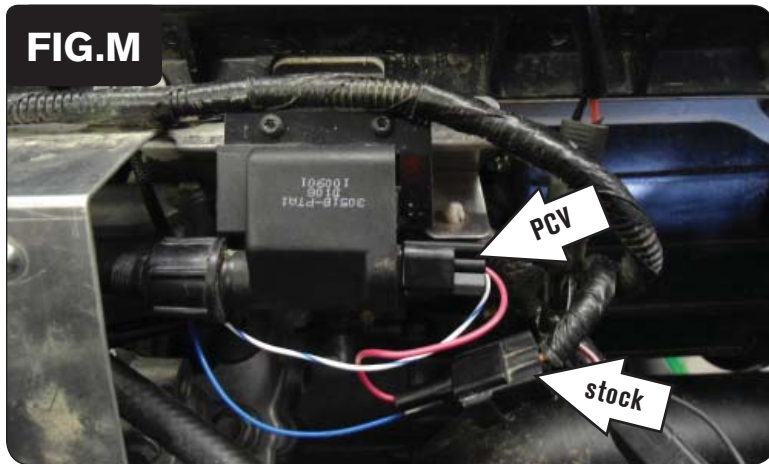
- 14 Unplug the stock wiring harness from the rear fuel injector as shown in Figure J.



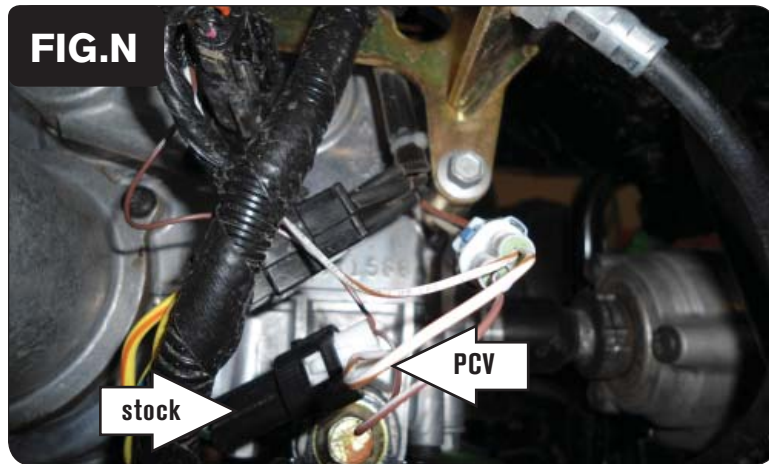
- 15 Attach the connectors with the yellow colored wires from the PCV harness to the rear fuel injector and stock harness as shown in Figure K.



- 16 Locate the ignition coil connector for the rear cylinder below the base of the radiator as shown in Figure L.



- 17 Attach the connectors from the PCV harness with the blue paired wires to the stock rear coil and the stock harness as shown in Figure M.



- 18 Locate the 2-pin crank sensor at the bottom of the engine on the left hand side near the shift linkage.
- 19 Attach the connectors from the PCV harness with the brown paired wires to the stock crank sensor connector as shown in Figure N.
- 20 Reinstall the body work and seats.

Visit www.powercommander.com to download software tutorials and firmware updates.