

[POWER] COMMANDER III

CERTIFIED **USB**

2004-2007 Suzuki AN650

Installation Instructions

Parts List

- 1 Power Commander
- 1 USB Cable
- 1 CD-ROM
- 1 Installation Guide
- 1 Power Adapter
- 2 Power Commander Decals
- 2 Dynojet Decals
- 2 Velcro® Strip
- 1 Alcohol Swab

Button Adjustment Display



Faceplate Buttons

Expansion Port

USB Port



The ignition MUST be turned OFF before installation!

You can also download the Power Commander software and latest maps from our web site at:

www.powercommander.com

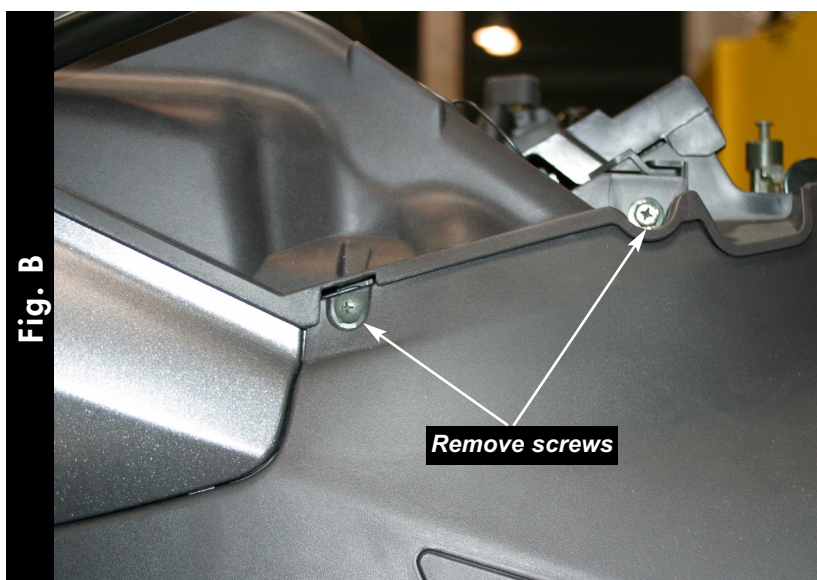
PLEASE READ ALL DIRECTIONS BEFORE STARTING INSTALLATION

Fig. A



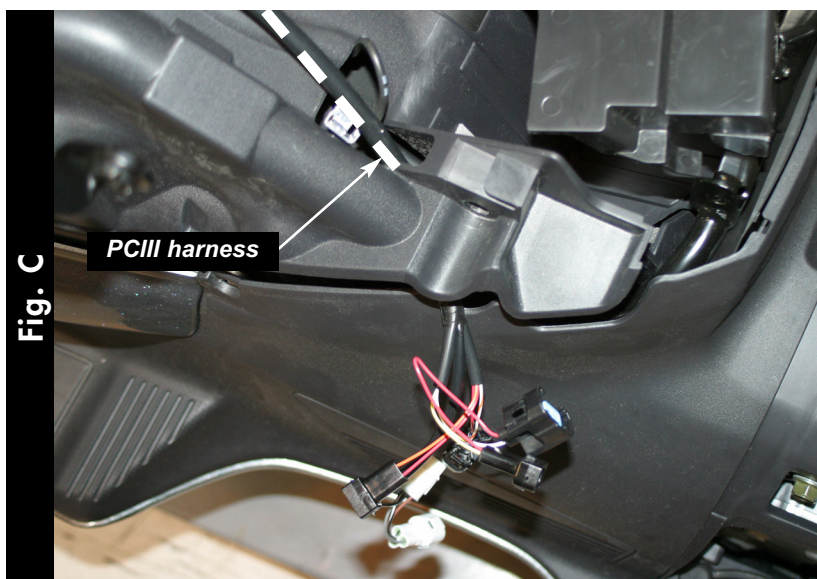
- 1 Remove the main seat completely from the motorcycle.
- 2 Remove the battery.
- 3 Remove the engine cover (Fig. A) by removing the screw and pulling outwards on each side..

Fig. B



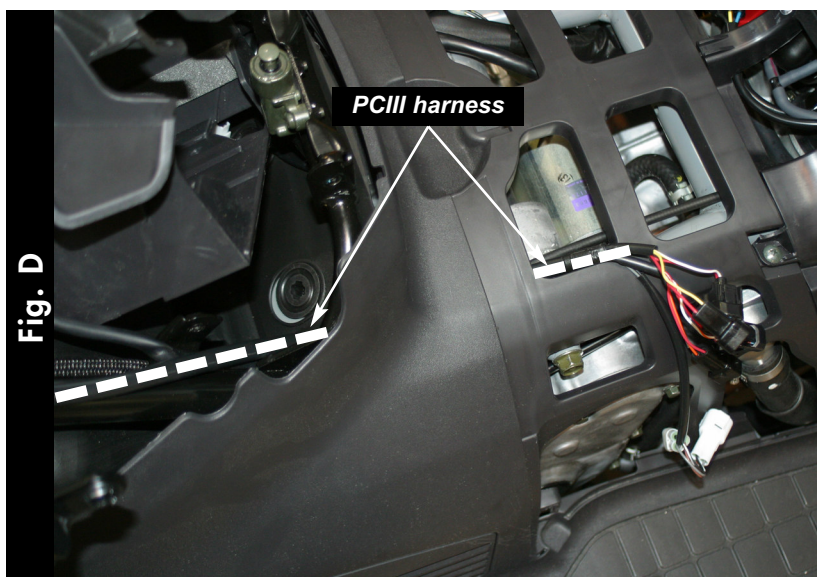
- 4 Remove the body cover by removing the 2 screws on each side of the panel (Fig. B)

Fig. C



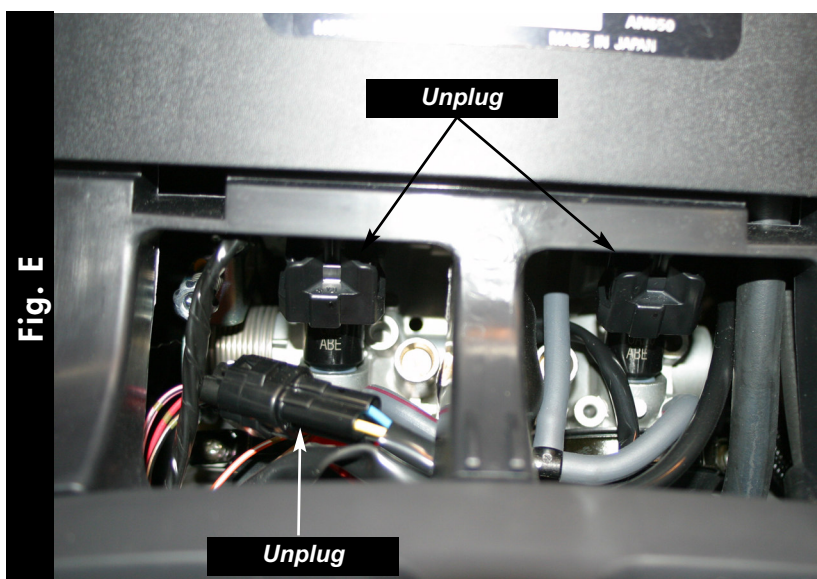
- 5 The battery tray panel will need to be lifted up so the PCIII harness can be routed through it (Fig. C).

Fig. D



- 6 Route the PCIII harness underneath the body panel (Fig. D). Keep the harness routed along the stock wiring harness.
- 7 Route the PCIII harness between the body panel and the engine and go towards the throttle bodies.

Fig. E



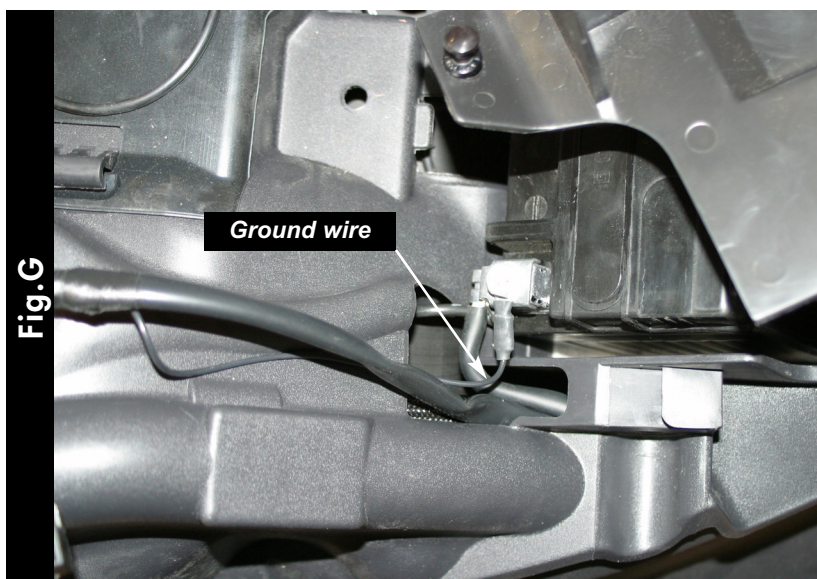
- 8 Unplug the stock wiring harness from the injectors (Fig. E).
- 9 Unplug the stock Throttle Position Sensor connector (Fig. F).

Fig. F



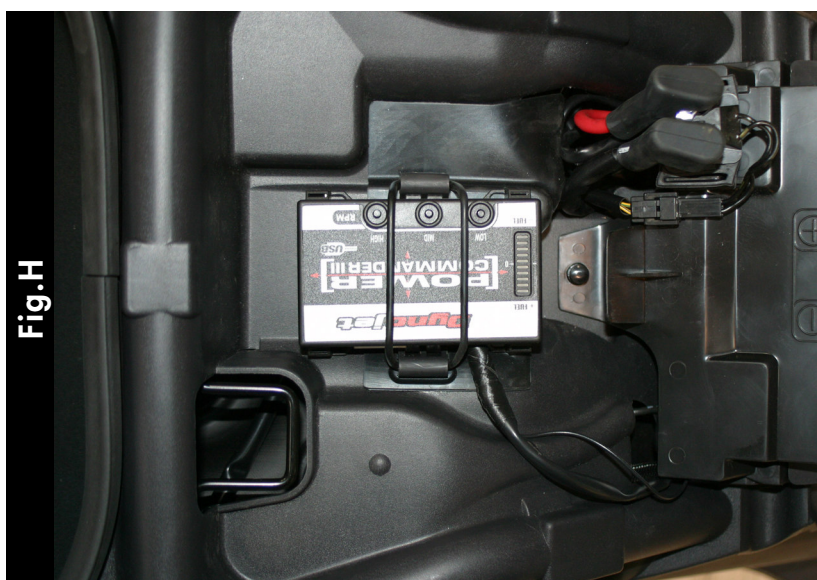
- 10 Plug the PCIII harness in-line of the stock wiring harness and the fuel injectors.
- 11 Plug the PCIII harness in-line of the stock TPS sensor harness.

Fig.G



- 12 Reinstall the battery tray and battery.
- 13 Attach the ground wire of PCIII to the negative side of the battery (Fig. G).

Fig.H



- 14 Install the PCIII in the location of the stock tool kit (Fig. H).
The tool kit can be placed next to the PCIII or in the truck area.
- 15 Reinstall the engine cover and seat.

Fig.J



- 16 Locate the O2 sensor connection under the engine cover. Unplug the stock O2 sensor harness from the main wiring harness.
- 17 Plug the Dynojet O2 sensor eliminator (part #76423008) into the main wiring harness (Fig. J). The O2 sensor harness does not need to be connected to anything.

The O2 sensor eliminator is optional and allows the user full control over the fuel curve. If the O2 eliminator is not used you will not be able to make fuel changes below 40% throttle.