

Thank you for purchasing this Dynojet kit. This kit has been developed for a motorcycle which is set to the parameters listed at the right in the "Stage" description. If your motorcycle does not meet any of these parameters please check with Dynojet before installation. For technical assistance contact your Dynojet distributor or call Dynojet U.S.A. (800)-992-4993

2191 Mendenhall Dr. Suite 105
 North Las Vegas, NV 89031
 TEL: 702-399-1423
 FAX: 702-399-1431
 8am-5pm Pacific Time
 Monday through Friday

Website Address
<http://www.dynojet.com>

The manufacturer and seller make no warranties express or implied which extend beyond the description of the goods contained herein. Any description of this product is for the purpose of identifying it and shall not be deemed to create an express warranty.



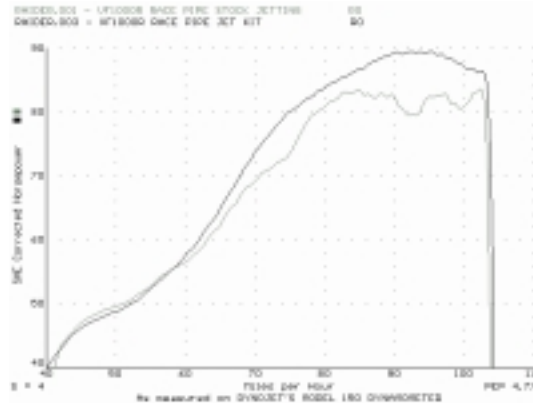
E1104.003

European Models Only

*83-84 Honda VF1100C
 & V65 Magna*

Stage 1

For mildly tuned machines using the stock airbox, with stock or K&N filter. May also be used with a good aftermarket exhaust system.
 K&N filter #HA-6583.



This graph shows a typical gain with a Dynojet jet kit.

WARNING

**NO SMOKING!
 NO OPEN FLAME!
 WHILE INSTALLING
 YOUR DYNOJET KIT**

Parts List		
4	Main Jets	DJ144
4	Main Jets	DJ122
1	Slide Drill	DD #19
4	Fuel Needles	DNO103
4	Adjusting Washers	DW0001
4	E-Clip	DE0001
4	Slide Springs	DSP003

STAGE ONE INSTRUCTIONS

DYNOJET

E1104.003

1. Remove the vacuum slide from the carbs. Remove the stock needles & spacers, noting order of assembly. Locate slide lift holes using Fig. A. With the slide drill (DD #19) supplied, enlarge your slide lift holes. The picture may not show your slide exactly, enlarge your slide lift hole or holes depending on your model, do **not** drill any new lift holes. Do not drill the needle hole.

2. Remove the spring from the needle retainer (Fig. A), clip the plastic mounting stud to half of its original length. Replace the spring. This adds clearance for the Dynojet needle.

3. Install Dynojet needles on groove #2, using all stock spacers. Install the Dynojet washers above the E-clip.

4. Install the Dynojet springs provided in place of the stock springs.

5. Remove stock main jets and replace with Dynojet main jets provided. If you have the 1983 model, use the DJ144 main jets, if you have the 1984 model, use the DJ122 main jets. If the main jets provided are not within 6 points of your stock jet install the main jet that brings you closest to your stock jet, lean or rich. Be sure that the jets you are changing are the main jets.

6. Locate the Fuel Mixture Screw (Fig. B). Carefully turn mixture screws clockwise until lightly seated, then turn back out 4 turns.

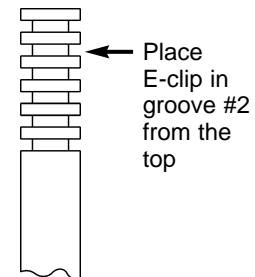


Fig. A

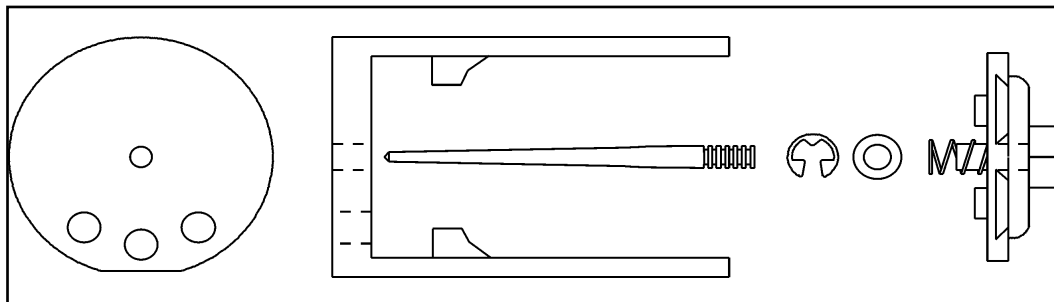


Fig. B

