

Thank you for purchasing this Dynojet kit. This kit has been developed for a motorcycle which is set to the parameters listed at the right in the "Stage" description. If your motorcycle does not meet any of these parameters please check with Dynojet before installation. For technical assistance contact your Dynojet distributor or call Dynojet U.S.A. (800)-992-4993

2191 Mendenhall Dr. Suite 105
 North Las Vegas, NV 89031
 TEL: 702-399-1423
 FAX: 702-399-1431
 8am-5pm Pacific Time
 Monday through Friday

Website Address
<http://www.dynojet.com>

The manufacturer and seller make no warranties express or implied which extend beyond the description of the goods contained herein. Any description of this product is for the purpose of identifying it and shall not be deemed to create an express warranty.



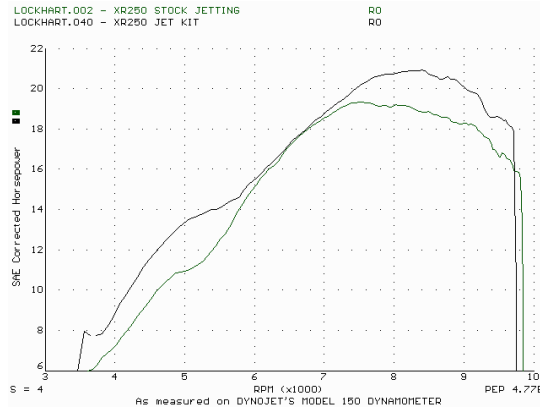
E1143.001

European Models Only

1991-95 Honda XR250L

Stage 1

For mildly tuned machines using the stock air-box, with stock or K&N filter. May also be used with a good aftermarket exhaust system
 K&N filter #HA-1312



This graph shows a typical gain with a Dynojet jet kit.

WARNING

**NO SMOKING!
 NO OPEN FLAME!
 WHILE INSTALLING
 YOUR DYNोजET KIT**

Parts List		
1	Main Jet	DJ120
1	Main Jet	DJ124
1	Fuel Needle	DNO208
1	Adjusting Washer	DW0001
1	E-Clip	DE0001

STAGE ONE INSTRUCTIONS

DYNOJET

E1143.001

1. Remove the vacuum slide from the carbs. Remove the stock needles & spacers, noting order of assembly.
2. Install the Dynojet needles on groove #3, using all stock spacers. Install the Dynojet washers above the E-clip.
3. Remove the stock main jets and replace with Dynojet main jets provided. If you are running the stock exhaust use the DJ120 main jets, if you are running an aftermarket header or slip-on with high flowing baffle, use the DJ124 main jets. This kit was designed with the stock airbox in place and stock pipes. Due to the carb bell mouth design, it is recommended that only the air filter be modified to enhance air flow. Be sure that the jets you are changing are the main jets.
4. Locate the fuel mixture tab (Fig. B), carefully turn mixture tab clockwise until lightly seated, then turn back out 2-1/2 turns.

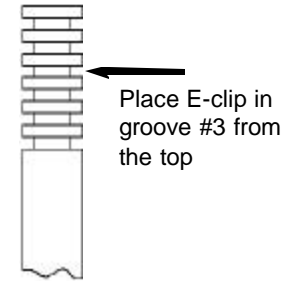


Fig. A

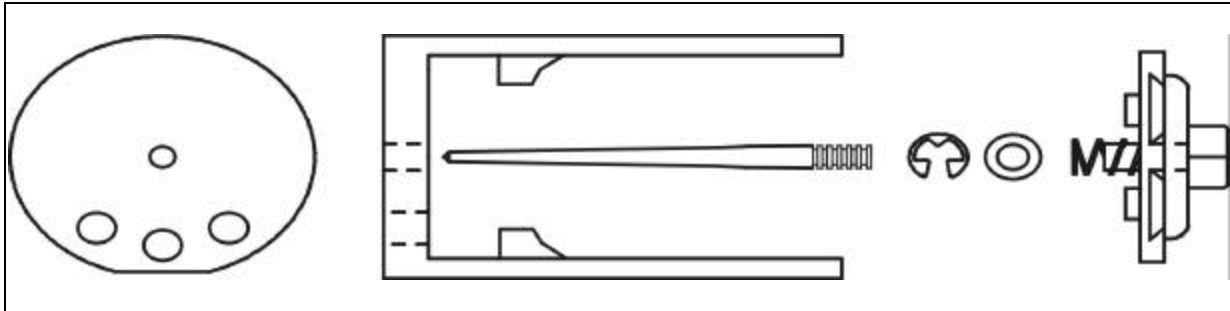


Fig. B

