

Thank you for purchasing this Dynojet kit. This kit has been developed for a motorcycle which is set to the parameters listed at the right in the "Stage" description. If your motorcycle does not meet any of these parameters please check with Dynojet before installation. For technical assistance contact your Dynojet distributor or call Dynojet U.S.A. (800)-992-4993



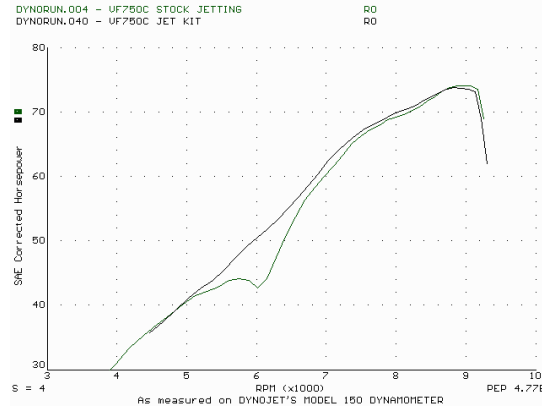
E1167.001

European Models Only

1994-98 Honda VF750C Magna

Stage 1

For mildly tuned machines using the stock air-box, with stock or K&N filter. May also be used with a good aftermarket exhaust system
K&N filter #N/A



This graph shows a typical gain with a Dynojet jet kit.

WARNING

**NO SMOKING!
NO OPEN FLAME!
WHILE INSTALLING
YOUR DYNोजET KIT**

Parts List

4	Main Jets	DJ100
4	Main Jets	DJ104
4	Main Jets	DJ108
4	Fuel Needles	DNO113
4	Adjusting Washers	DW0001
4	E-Clips	DE0001
1	Slide Drill	DD #50
4	Slide Springs	DSP008
1	Idle Adjustment Tool	DT009

2191 Mendenhall Dr. Suite 105
North Las Vegas, NV 89031
TEL: 702-399-1423
FAX: 702-399-1431
8am-5pm Pacific Time
Monday through Friday

Website Address
<http://www.dynojet.com>

The manufacturer and seller make no warranties express or implied which extend beyond the description of the goods contained herein. Any description of this product is for the purpose of identifying it and shall not be deemed to create an express warranty.

STAGE ONE INSTRUCTIONS

DYNOJET
E1167.001

1. Remove the vacuum slide from the carbs. Remove the spring from the slide and replace with the Dynojet spring(s) provided. Thread one of the slide cover screws into the center of the needle retainer (Fig. A) and pull up gently. Remove stock needles & spacers, noting order of assembly (Fig. B)

2. With the slide drill (DD #50) enclosed, drill your slide lift holes (Fig. D), Drill both slide lift holes. Do not drill the needle hole .

3. Install Dynojet needles on groove# 3, using all stock spacers(Fig. B). Install the Dynojet washers above the E-clip.

4. Remove stock main jets and replace with Dynojet mains provided. If you are running the stock exhaust use the DJ104, if you are running an aftermarket header or slip-on with high flowing baffle, use the DJ108. Be sure that the jet you are changing is the main jet.

5. Locate the Fuel Mixture Tab(Fig. C) Using the tool supplied, carefully turn mixture tabs clockwise until they seat, turn out 2 turns or where you find your best idle.

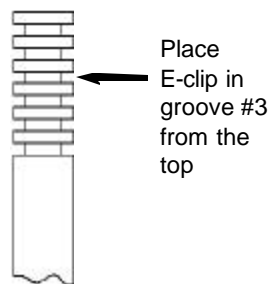


Fig. D

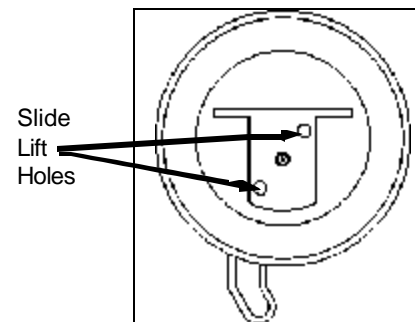


Fig. A

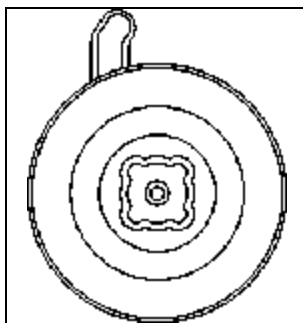


Fig. B

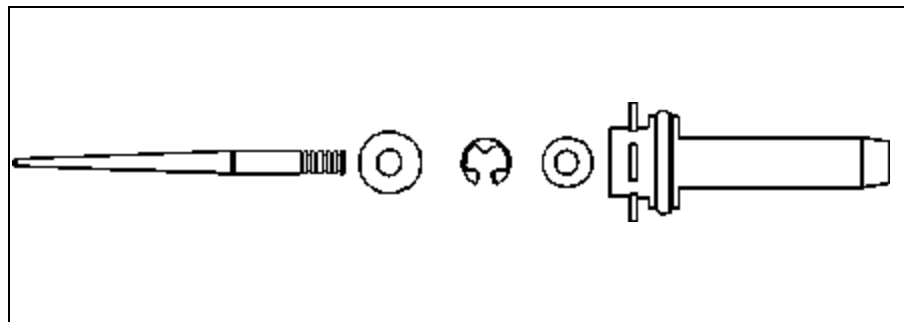


Fig. C

