

Thank you for purchasing this Dynojet kit. This kit has been developed for a motorcycle which is set to the parameters listed at the right in the "Stage" description. If your motorcycle does not meet any of these parameters please check with Dynojet before installation. For technical assistance contact your Dynojet distributor or call Dynojet U.S.A. (800)-992-4993



**E1740.002**

European Models Only

*1991-94 Honda CBR600F2*

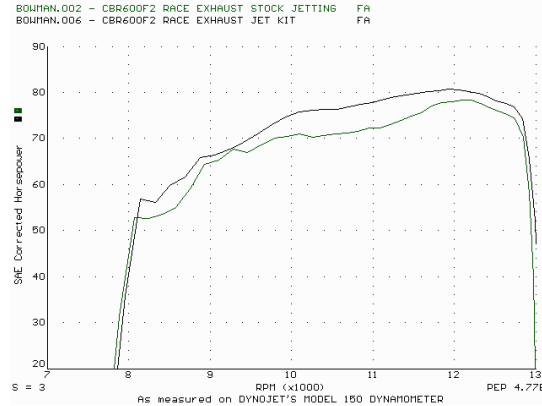
**Stage 7 - Race Use Only**

For mildly tuned machines using the stock airbox, with stock or K&N filter# HA-6091. May also be used with a good aftermarket exhaust system.

2191 Mendenhall Dr. Suite 105  
North Las Vegas, NV 89031  
TEL: 702-399-1423  
FAX: 702-399-1431  
8am-5pm Pacific Time  
Monday through Friday

Website Address  
<http://www.dynojet.com>

The manufacturer and seller make no warranties express or implied which extend beyond the description of the goods contained herein. Any description of this product is for the purpose of identifying it and shall not be deemed to create an express warranty.



*This graph shows a typical gain with a Dynojet jet kit.*

# WARNING

**NO SMOKING!  
NO OPEN FLAME!  
WHILE INSTALLING  
YOUR DYNOJET KIT**

## Parts List

4	Main Jets	DJ132
4	Main Jets	DJ136
4	Fuel Needles	DNO307
4	Adjusting Washers	DW0001
4	E-Clips	DE0001
4	Needle Shrouds	DNJT02
1	Glue	DA0001
4	Slide Springs	DSP007
1	Shroud Tool	DT007
1	Main Air Jet Drill	DD #62

## STAGE SEVEN INSTRUCTIONS

1. Remove the vacuum slide from the carbs. Remove the stock needles & spacers, noting the order of assembly (Fig. A).
2. Locate the Dynojet part DNJT02 supplied. With cutaway facing up and to the engine (Fig. B), use the shroud tool provided (DT007) to press over stock needle jet. Before pressing down add a touch of glue to the outer base of the stock needle jet, then press down. Check to make sure there is no excess glue visible.
3. Install the Dynojet needles on groove #3, using all stock spacers. Install the Dynojet washer above the E-clip.
4. Install the Dynojet springs in place of the stock springs, making sure springs are aligned properly.
5. Remove stock main jets and replace with Dynojet mains provided. Use the DJ132 main jets with aftermarket header. Be sure the jets you are changing are the main jets.
6. Locate the Fuel Mixture Tab underneath the carbs on the engine side (Fig.C). Carefully turn mixture tabs clockwise until lightly seated, then turn back out 2-1/2 turns.
7. Locate the main air jet (Fig. B). With the slide drill (DD #62) provided, drill the main air jet by hand and use some grease on the drill to catch the swarf. Blow through the float bowl vent tubes to clean the hole after drilling.

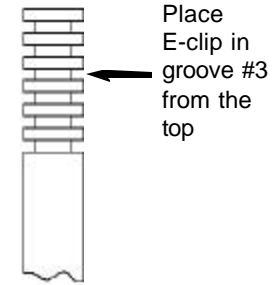


Fig. A

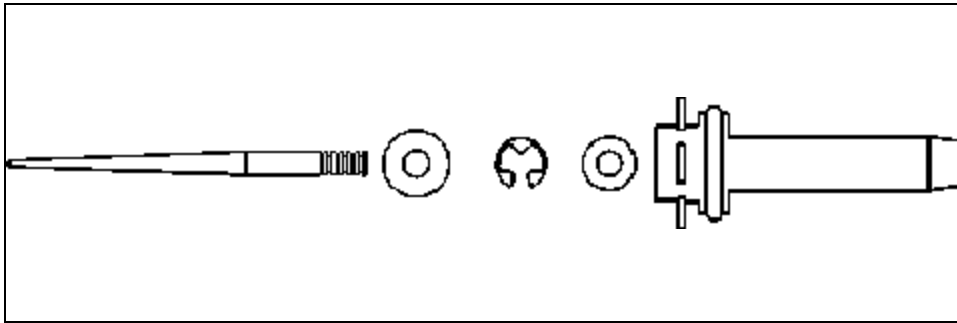
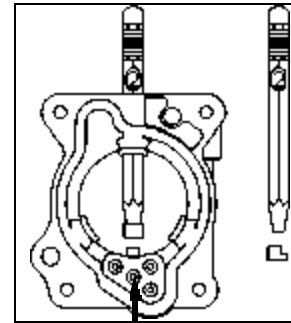
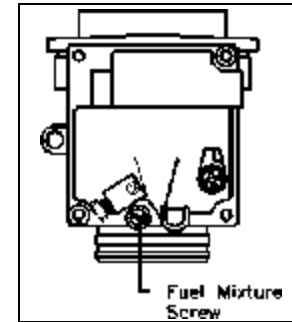


Fig. B



Main Air Jet

Fig. C



Fuel Mixture Screw