

Thank you for purchasing this Dynojet kit. This kit has been developed for a motorcycle which is set to the parameters listed at the right in the "Stage" description. If your motorcycle does not meet any of these parameters please check with Dynojet before installation. For technical assistance contact your Dynojet distributor or call Dynojet U.S.A. (800)-992-4993

2191 Mendenhall Dr. Suite 105  
 North Las Vegas, NV 89031  
 TEL: 702-399-1423  
 FAX: 702-399-1431  
 8am-5pm Pacific Time  
 Monday through Friday

Website Address  
<http://www.dynojet.com>

The manufacturer and seller make no warranties express or implied which extend beyond the description of the goods contained herein. Any description of this product is for the purpose of identifying it and shall not be deemed to create an express warranty.



**E2135.001**

European Models Only

1984-85 Kawasaki KZ700-750  
 w/ Mikuni Carbs

**Stage 1&3**

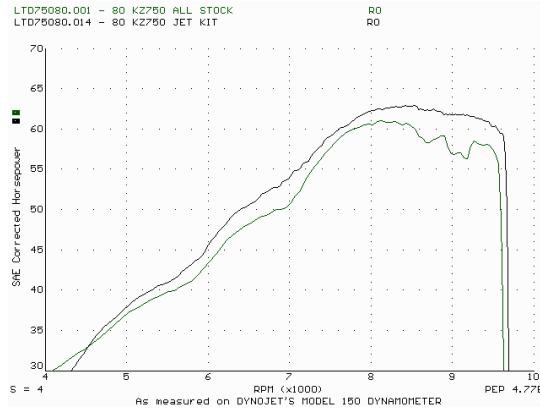
**STAGE 1**

For mildly tuned machines using the stock airbox, with stock or K&N filter #KA-7580

**STAGE 3**

For mildly tuned machines using individual filters or velocity stacks. K&N filters #RC-0984

Both stages may be used with a good aftermarket exhaust



*This graph shows a typical gain with a Dynojet jet kit.*

# WARNING

**NO SMOKING!  
 NO OPEN FLAME!  
 WHILE INSTALLING  
 YOUR DYNOJET KIT**

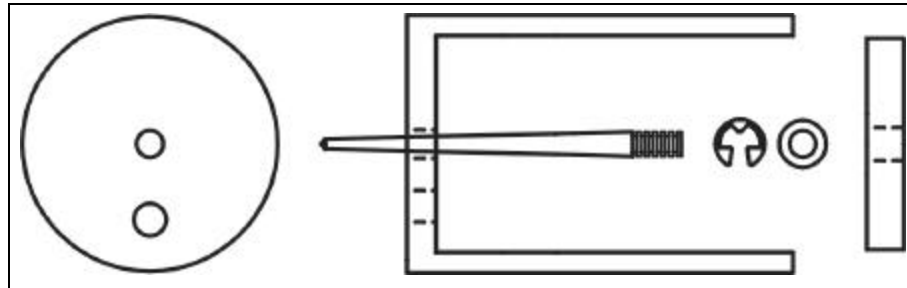
Parts List		
4	Main Jets	DJ110
4	Main Jets	DJ160
4	Main Jets	DJ165
1	Slide Drill	DD #31
4	Fuel Needles	DNO302
4	Adjusting Washers	DW0001
4	E-Clips	DE0001
4	Main Air Correctors	DCO302
1	Tool	DT002
1	Glue	DA0001

**STAGE ONE INSTRUCTIONS**

1. Remove the vacuum slide from the carbs. Remove the stock needles & spacers, noting the order of assembly.
2. Using the slide drill (DD# 31) provided, drill your slide lift hole (Fig. A). The picture may not show your slide exactly. Drill your existing slide lift hole only, do not drill any new holes and do not drill the needle hole.
3. Install the Dynojet needles on groove #4, using all stock spacers (Fig. A). Install the Dynojet washers above the E-clip.
4. Remove the main jet and replace with the Dynojet main jets provided. Use the DJ110 main jets provided. Be sure that the jets you are changing are the main jets.
5. Locate the fuel mixture screws (Fig. B). Carefully turn mixture screw clockwise until seated, then back out until you find your best idle. Our base setting is 2 turns.



Fig. A



**STAGE THREE INSTRUCTIONS**

1. Remove the vacuum slide from the carbs. Remove the stock needles & spacers, noting the order of assembly.
2. Using the slide drill (DD# 31) provided, drill your slide lift hole (Fig. A). The picture may not show your slide exactly. Drill your existing slide lift hole only, do not drill any new holes and do not drill the needle hole.
3. Install the Dynojet needles on groove #4, using all stock spacers (Fig. A). Install the Dynojet washers above the E-clip.
4. Remove the main jet and replace with the Dynojet main jets provided. Use the DJ160 main jets for stock exhaust, if using an aftermarket header or slip-ons with free flowing baffles use the DJ165 main jets. Be sure that the jets you are changing are the main jets.
5. Locate the fuel mixture screws (Fig. B). Carefully turn mixture screw clockwise until seated, then back out until you find your best idle. Our base setting is 2 turns.
6. Install the main air correctors (DCO302) provided, with the flat end facing towards carb in the main air jet (Fig. C). Tap in lightly with the tool (DT001) provided. Put a touch of glue on the outer edge of the corrector, without blocking the corrector.

Fig. B

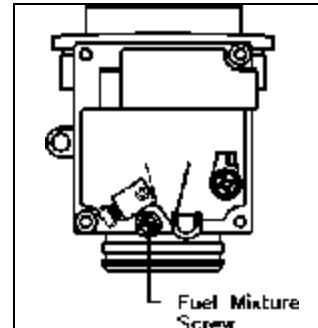


Fig. C - Stage 3 Only

