

Thank you for purchasing this Dynojet kit. This kit has been developed for a motorcycle which is set to the parameters listed at the right in the "Stage" description. If your motorcycle does not meet any of these parameters please check with Dynojet before installation. For technical assistance contact your Dynojet distributor or call Dynojet U.S.A. (800)-992-4993

2191 Mendenhall Dr. Suite 105
 North Las Vegas, NV 89031
 TEL: 702-399-1423
 FAX: 702-399-1431
 8am-5pm Pacific Time
 Monday through Friday

Website Address
<http://www.dynojet.com>

The manufacturer and seller make no warranties express or implied which extend beyond the description of the goods contained herein. Any description of this product is for the purpose of identifying it and shall not be deemed to create an express warranty.



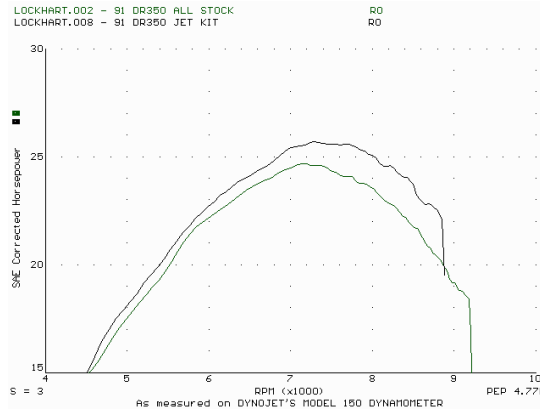
E3101.001

European Models Only

1990-95 Suzuki DR250

Stage 2

For mildly tuned machines using the stock air-box with the airbox lid removed, with stock or K&N filter. May also be used with a good after-market exhaust system
 K&N filter #SU-3590



This graph shows a typical gain with a Dynojet jet kit.

WARNING

**NO SMOKING!
 NO OPEN FLAME!
 WHILE INSTALLING
 YOUR DYNJET KIT**

Parts List

1	Main Jet	DJ136
1	Main Jet	DJ140
1	Fuel Needle	DNO308
1	Adjusting Washer	DW0001
1	E-clip	DE0001

STAGE TWO INSTRUCTIONS

DYNOJET

E3101.001

1. For stage 2 applications, maximize airflow thru the airbox either by modifying or removing the airbox lid.
2. Remove the vacuum slide from the carbs. Remove the stock needles & spacers, noting the order of assembly.
3. Install the Dynojet needles on groove #4, using all stock spacers. Install the Dynojet washer above the E-clip.
4. Remove the stock main jet and replace with the Dynojet main jet provided. If you are running the stock exhaust use the DJ136 main jet, if you are running an aftermarket header or slip-on with high flowing baffle, use the DJ140 main jet. Be sure that the jet you are changing is the main jet.
5. Locate the fuel mixture screw (Fig. B). Carefully turn mixture screws clockwise until lightly seated, then turn back out 2-1/2 turns.

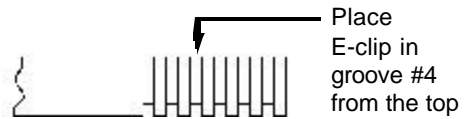


Fig. A

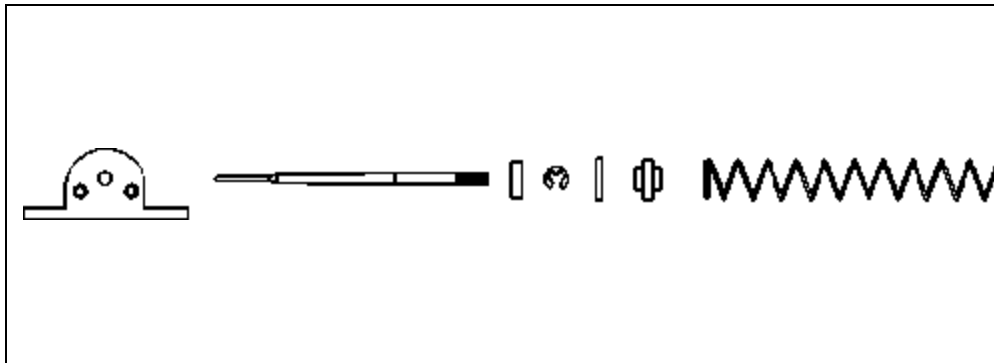


Fig. B

