

Thank you for purchasing this Dynojet kit. This kit has been developed for a motorcycle which is set to the parameters listed at the right in the "Stage" description. If your motorcycle does not meet any of these parameters please check with Dynojet before installation. For technical assistance contact your Dynojet distributor or call Dynojet U.S.A. (800)-992-4993



E3133.001

European Models Only

1980-86 Suzuki GS1100-1150, 16-Valve

Stage 1&3

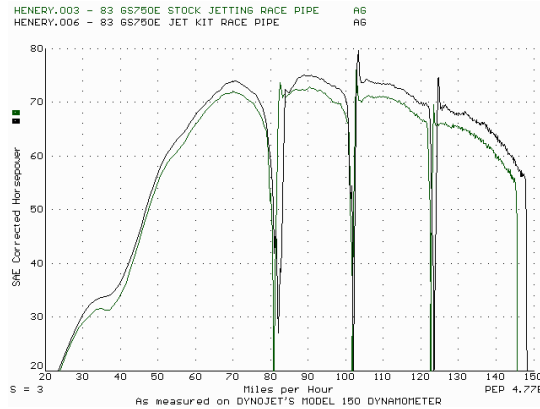
Stage 1

For mildly tuned machines using the stock airbox, with stock or K&N filter #SU-7592.

Stage 3

For mildly tuned machines using individual filters or velocity stacks. K&N Filters #RU-2922.

Both stages may be used with a good aftermarket exhaust.



This graph shows a typical gain with a Dynojet jet kit.

WARNING

**NO SMOKING!
NO OPEN FLAME!
WHILE INSTALLING
YOUR DYNQJET KIT**

2191 Mendenhall Dr. Suite 105
North Las Vegas, NV 89031
TEL: 702-399-1423
FAX: 702-399-1431
8am-5pm Pacific Time
Monday through Friday

Website Address
<http://www.dynojet.com>

The manufacturer and seller make no warranties express or implied which extend beyond the description of the goods contained herein. Any description of this product is for the purpose of identifying it and shall not be deemed to create an express warranty.

Parts List

4	Main Jets	DJ114
4	Main Jets	DJ118
4	Main Jets	DJ132
4	Main Jets	DJ138
4	Fuel Needles	DNT406
4	E-Clips	DE0001
4	Adjusting Washers	DW0001
1	Slide Drill	DD #32
4	Pilot Air Jets	DH160

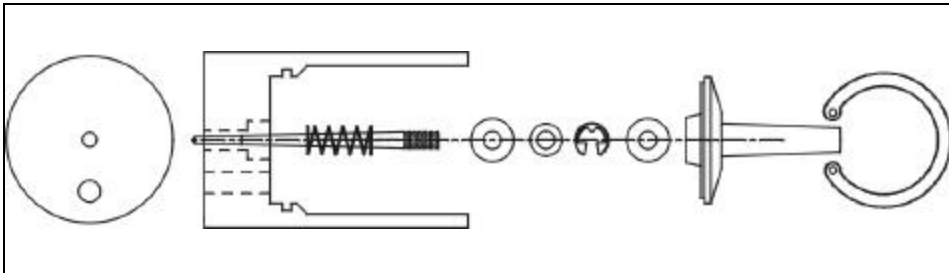
STAGE ONE INSTRUCTIONS

1. Remove vacuum slide from carb. Remove stock needle and spacers, noting order of assembly (Fig.A). Use the #32 drill provided to enlarge the slide lift holes.
2. Install Dynojet needles on groove #3 from the top. Use all stock spacers (Fig. A). Install the small Dynojet washers above the E-clip. After installing the slide in the carb be sure to check slide movement manually before air box installation.
3. Remove the stock main jets and replace with Dynojet mains provided. If you are running the stock exhaust install the DJ114 main jets. If you are running an aftermarket exhaust or slip-ons with high flowing baffles use the DJ118 main jets. Be sure that the jets you are changing are the main jets.
4. Locate the fuel mixture plug (Fig. B). Carefully turn the mixture screw clockwise until lightly seated, then back out 2-1/2 turns.

NOTES:

-The pilot airjet (DH160) is optional. Using the pilot air jet will lean out the bottom end. Use the jet if you are experiencing excessive loss of mileage or bike starts without choke when cold. Using this jet will warrant a richer mixture screw setting. Refer to Fig. C for pilot jet location.

Fig. A



STAGE THREE INSTRUCTIONS

DYNOJET

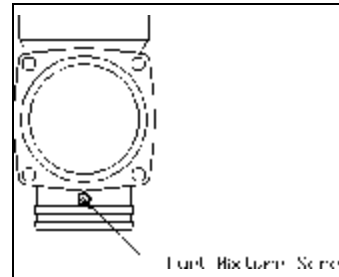
E3133.001

1. Remove vacuum slide from carb. Remove stock needle and spacers, noting order of assembly (Fig.A). Use the #32 drill provided to enlarge the slide lift holes
2. Install Dynojet needles on groove #3 from the top. Use all stock spacers (Fig. A). Install the small Dynojet washers above the E-clip. After installing the slide in the carb be sure to check slide movement manually before air box installation.
3. Remove the stock main jets and replace with Dynojet mains provided. If you are running the stock exhaust install the DJ130 main jets. If you are running an aftermarket exhaust or slip-on with high flowing baffle use the DJ134 main jets. Be sure that the jets you are changing are the main jets.
4. Locate the fuel mixture plug (Fig. B). Carefully turn the mixture screw clockwise until lightly seated, then back out 2-1/2 turns.

Place E-clip in
groove #3 from
the top



Fig. B



Pilot Airjet Fig. C

