

Thank you for purchasing this Dynojet kit. This kit has been developed for a motorcycle which is set to the parameters listed at the right in the "Stage" description. If your motorcycle does not meet any of these parameters please check with Dynojet before installation. For technical assistance contact your Dynojet distributor or call Dynojet U.S.A. (800)-992-4993



E3308.001

European Models Only

1983-86 Suzuki GSX550ES

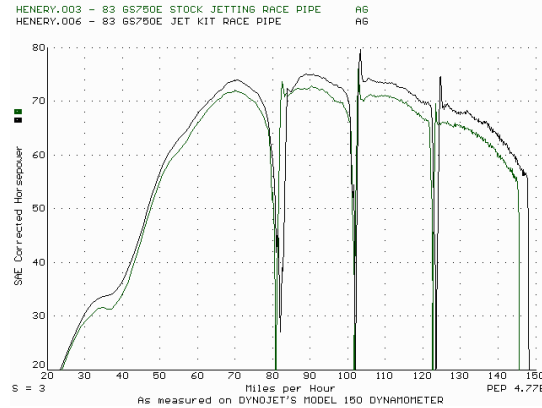
Stage 3

For mildly tuned machines using individual filters or velocity stacks. May also be used with a good aftermarket exhaust system
K&N filter #HA-0750

2191 Mendenhall Dr. Suite 105
North Las Vegas, NV 89031
TEL: 702-399-1423
FAX: 702-399-1431
8am-5pm Pacific Time
Monday through Friday

Website Address
<http://www.dynojet.com>

The manufacturer and seller make no warranties express or implied which extend beyond the description of the goods contained herein. Any description of this product is for the purpose of identifying it and shall not be deemed to create an express warranty.



This graph shows a typical gain with a Dynojet jet kit.

WARNING

**NO SMOKING!
NO OPEN FLAME!
WHILE INSTALLING
YOUR DYNOJET KIT**

Parts List

4	Main Jets	DJ114
4	Main Jets	DJ118
4	Pilot Air Jets	DC0118
4	Fuel Needles	DNO308
4	Adjusting Washers	DW0001
4	E-clips	DE0001
2	Slide Weight	DSW001
1	Glue	DA0001
1	Tool	DT001
1	Insert	DI22
1	Insert	DI24
1	Insert	DI25
1	Insert	DI26

STAGE THREE INSTRUCTIONS

1. Remove the vacuum slide from the carbs. Remove the stock needles & spacers, noting the order of assembly (Fig. A).
2. Install the Dynojet needles on groove #3, using all stock spacers. Install the Dynojet washers above the E-clip.
3. Remove the stock main jets and replace with Dynojet main jets provided. If you are running the stock exhaust use the DJ165 main jets, if you are running an aftermarket header or slip-on, use the DJ160 main jets. Be sure that the jets you are changing are the main jets.
4. Locate the main air jet passage (Fig. B). With the flat end facing into the carb, install the main air correctors (DCO301) provided. Use the tool (DT002) provided to tap lightly in place. With the glue provided lightly touch a dab on the outer edge of the air corrector. Allow glue to dry.
5. Locate the fuel mixture screw (Fig. C). Carefully turn mixture screws clockwise until they seat, turn out 4-1/2 turns.

DYNOJET
E3308.001

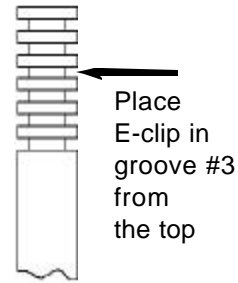


Fig. C

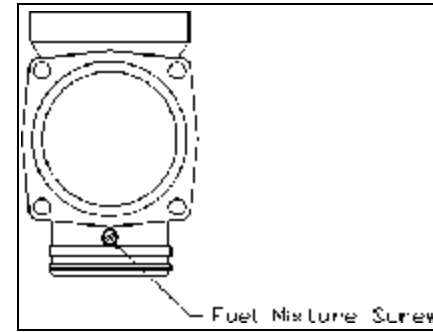


Fig. A

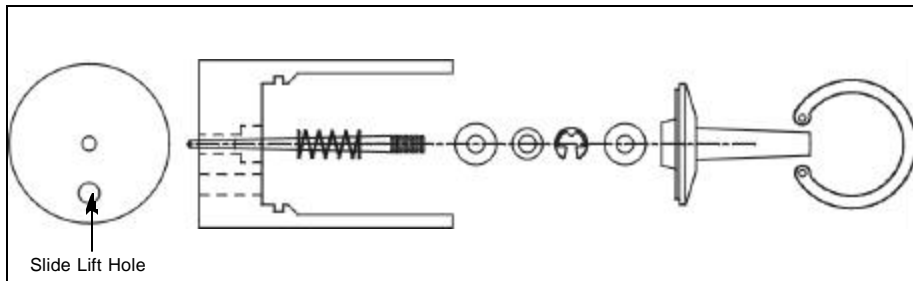


Fig. B

