

Thank you for purchasing this Dynojet kit. This kit has been developed for a motorcycle which is set to the parameters listed at the right in the "Stage" description. If your motorcycle does not meet any of these parameters please check with Dynojet before installation. For technical assistance contact your Dynojet distributor or call Dynojet U.S.A. (800)-992-4993

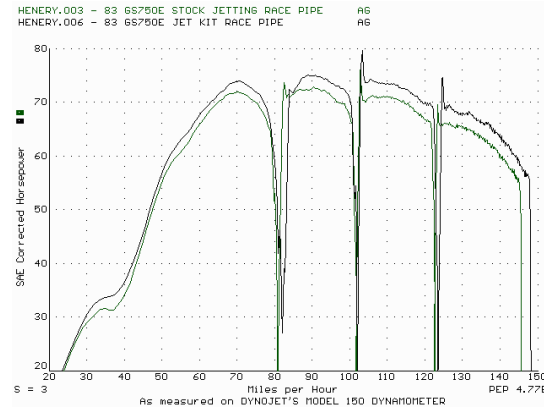


E3315.003

European Models Only

1980-85 Suzuki GS750
Stage 3

For mildly tuned machines using the stock air-box, with stock or K&N filter. May also be used with a good aftermarket exhaust system
K&N filter #RC-0984



This graph shows a typical gain with a Dynojet jet kit.

WARNING

**NO SMOKING!
NO OPEN FLAME!
WHILE INSTALLING
YOUR DYNOJET KIT**

2191 Mendenhall Dr. Suite 105
North Las Vegas, NV 89031
TEL: 702-399-1423
FAX: 702-399-1431
8am-5pm Pacific Time
Monday through Friday

Website Address
<http://www.dynojet.com>

The manufacturer and seller make no warranties express or implied which extend beyond the description of the goods contained herein. Any description of this product is for the purpose of identifying it and shall not be deemed to create an express warranty.

Parts List

4	Main Jets	DJ124
4	Main Jets	DJ130
4	Main Air Correctors	DCO302
4	Fuel Needles	DNT604
4	Adjusting Washers	DW0001
4	E-clips	DE0001
1	Tool	DT002
1	Glue	DA0001
1	Slide Drill	DD #30

STAGE THREE INSTRUCTIONS

1. Remove the vacuum slide from the carbs. Remove the stock needles & spacers, noting order of assembly. Using the slide drill (DD #30) provided enlarge your slide lift holes. Do **not** drill the needle hole.
2. Install the Dynojet needles on groove #4, using all stock spacers. Install the Dynojet washers above the E-clip.
3. Remove the stock main jets and replace with the Dynojet main jets provided. If you are running the stock exhaust use the DJ124 main jets, if you are running an after-market header or slip-on, use the DJ130 main jets. Be sure that the jets you are changing are the main jets.
4. Locate the main air jet passage (Fig. B). With the flat end facing into the carb, install the main air correctors provided (DCO302). Use the tool provided (DT002) to tap lightly in place. With the glue provided lightly touch a dab on the outer edge of the air corrector. Allow glue to dry.
5. Locate the Fuel Mixture Screw (Fig. B). Carefully turn mixture screws clockwise until they seat, turn out until you find your best idle. Our base setting is 3 turns.

DYNOJET
E3315.003

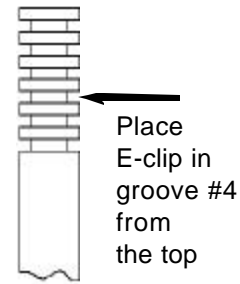


Fig. C

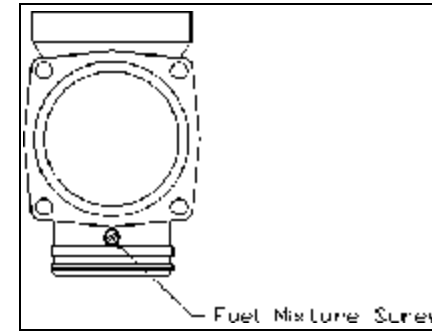


Fig. A

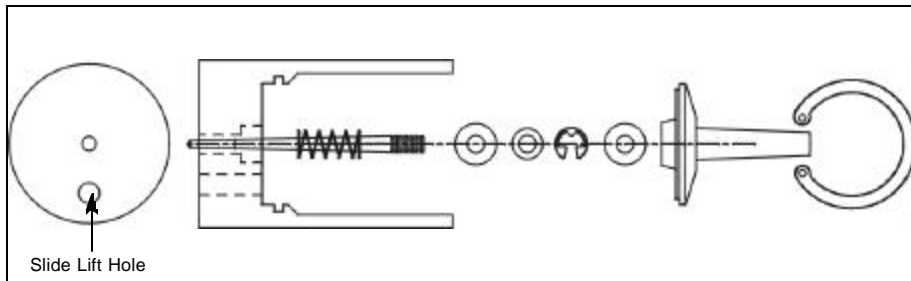


Fig. B

