

Thank you for purchasing this Dynojet kit. This kit has been developed for a motorcycle which is set to the parameters listed at the right in the "Stage" description. If your motorcycle does not meet any of these parameters please check with Dynojet before installation. For technical assistance contact your Dynojet distributor or call Dynojet U.S.A. (800)-992-4993

2191 Mendenhall Dr. Suite 105
 North Las Vegas, NV 89031
 TEL: 702-399-1423
 FAX: 702-399-1431
 8am-5pm Pacific Time
 Monday through Friday

Website Address
<http://www.dynojet.com>

The manufacturer and seller make no warranties express or implied which extend beyond the description of the goods contained herein. Any description of this product is for the purpose of identifying it and shall not be deemed to create an express warranty.



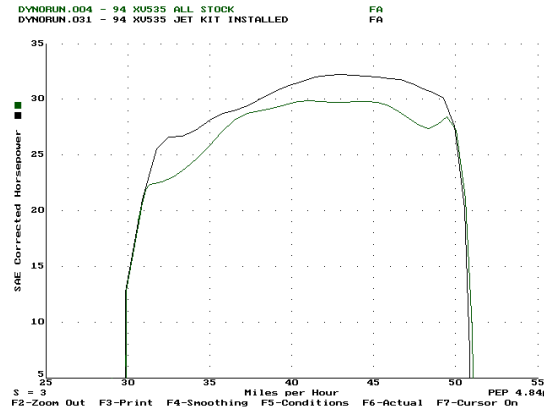
E4131.002

European Models Only

1993-98 Yamaha XV 535 Virgo

Stage 1

For mildly tuned machines using the stock air-box, with stock or K&N filter. May also be used with a good aftermarket exhaust system.
 K&N filter #N/A



This graph shows a typical gain with a Dynojet jet kit.

WARNING

**NO SMOKING!
 NO OPEN FLAME!
 WHILE INSTALLING
 YOUR DYNOJET KIT**

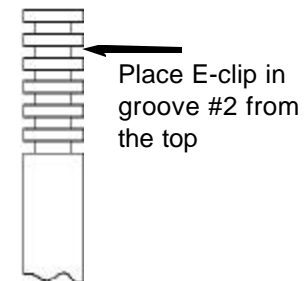
Parts List

2	Main Jets	DJ126
2	Main Jets	DJ130
2	Pilot Air Jets	DJ160
2	Fuel Needles	DNT407
1	Slide Drill	DD #32
2	Adjusting Washers	DW0001
2	E-Clips	DE0001

STAGE ONE INSTRUCTIONS

DYNOJET
E4131.002

1. Remove the vacuum slide from the carbs. Remove stock needles & spacers, noting order of assembly. Use the slide drill (DD#32) provided to enlarge the slide lift hole. Do **not** drill the needle hole.
2. Install the pilot air jet DJ160 in location shown in (Fig. B).
3. Install the Dynojet needles on groove #2, using all stock spacers. Install the Dynojet washer above the E-clip.
4. Remove the stock main jets and replace with Dynojet main jets provided. If you are running the stock exhaust use the DJ126 main jets, if you are running an aftermarket header with straight through muffler, use the DJ130 main jets. It is not necessary to completely remove float bowls to change the main jets remove screws and ease the bowl aside allowing main jet removal. Be extremely careful not to disturb float assembly when performing this task.
5. Locate the fuel mixture screw (Fig. B), Carefully turn mixture screws clockwise until they seat, turn out 2-1/2 turns.



NOTE:

It is not necessary to remove carbs from bike to install this kit.

Fig. A

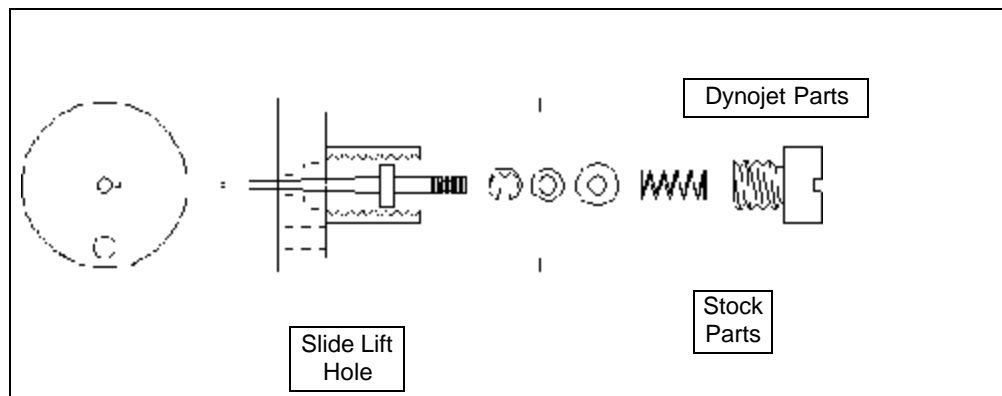


Fig. B

