

Thank you for purchasing this Dynojet kit. This kit has been developed for a motorcycle which is set to the parameters listed at the right in the "Stage" description. If your motorcycle does not meet any of these parameters please check with Dynojet before installation. For technical assistance contact your Dynojet distributor or call Dynojet U.S.A. (800)-992-4993

2191 Mendenhall Dr. Suite 105
 North Las Vegas, NV 89031
 TEL: 702-399-1423
 FAX: 702-399-1431
 8am-5pm Pacific Time
 Monday through Friday

Website Address
<http://www.dynojet.com>

The manufacturer and seller make no warranties express or implied which extend beyond the description of the goods contained herein. Any description of this product is for the purpose of identifying it and shall not be deemed to create an express warranty.



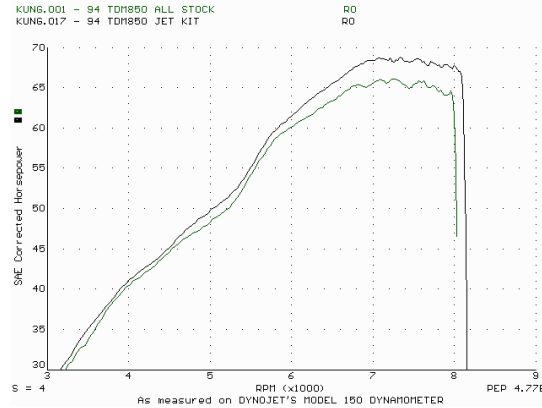
E4134.005

European Models Only

1992-98 Yamaha TDM 850

Stage 1

For mildly tuned machines using the stock air-box, with stock or K&N filter. May also be used with a good aftermarket exhaust system.
 K&N filter #YA-7585



This graph shows a typical gain with a Dynojet jet kit.

WARNING

**NO SMOKING!
 NO OPEN FLAME!
 WHILE INSTALLING
 YOUR DYNOJET KIT**

Parts List

2	Main Jets	YJ150
2	Main Jets	YJ155
2	Main Jets	YJ160
2	Main Jets	YJ165
2	Main Jets	YJ170
10	Main Jet O-Ring	YJ-0
2	Fuel Needles	DNO356
2	E-Clips	DE0001
2	Adjusting Washers	DW0001

STAGE ONE INSTRUCTIONS

DYNOJET

E4134.005

1. Remove vacuum slide from carbs. Remove stock needles & spacers, noting order of assembly (Fig. A).
2. Install Dynojet needles on groove#2, using all stock spacers(Fig. A). Install the Dynojet washer above the E-clip.
3. Remove stock main jets and Replace Dynojet Mains provided. Use the YJ150 main jetson 92-93 models with stock exhaust. Use the YJ160 main jets on 94-95 models with stock exhaust. Use the YJ165 main jets on 1996 models with stock exhaust. Use the YJ155 main jets on 92-93 models with aftermarket header or slip-on with high flowing baffles. Use the YJ165 main jets on 94-95 models with high flowing baffles. Use the YJ170 main jets on 1996 models with high flowing baffles. Be sure that the jets you are changing are the main jets.
4. Locate the Fuel Mixture screws (Fig. B), if you see a screw head at Fig. B proceed to adjusting procedure. Carefully turn mixture screws clockwise until they seat, turn out 2 1/2 turns.

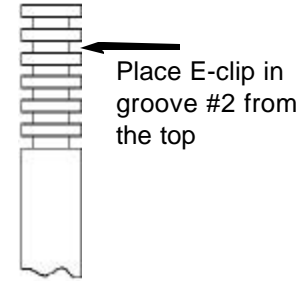


Fig. A

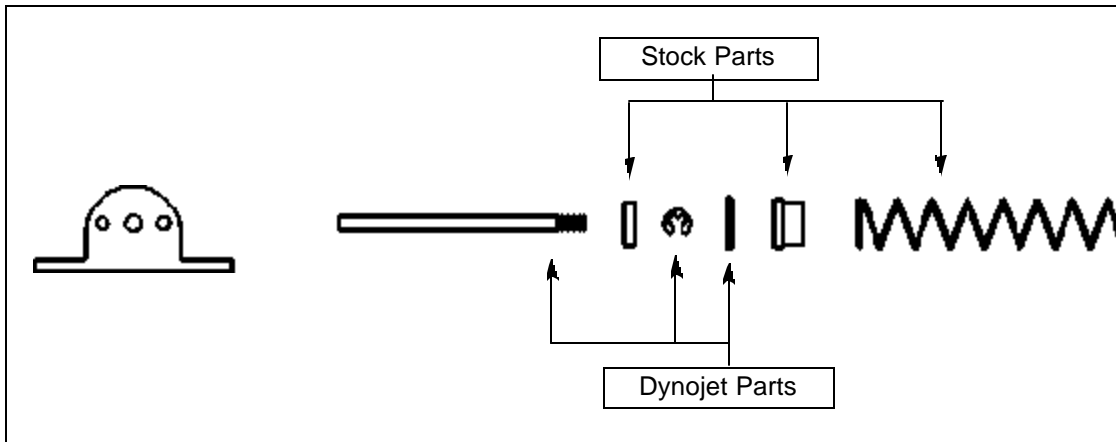


Fig. B

