

Thank you for purchasing this Dynojet kit. This kit has been developed for a motorcycle which is set to the parameters listed at the right in the "Stage" description. If your motorcycle does not meet any of these parameters please check with Dynojet before installation. For technical assistance contact your Dynojet distributor or call Dynojet U.S.A. (800)-992-4993

2191 Mendenhall Dr. Suite 105  
 North Las Vegas, NV 89031  
 TEL: 702-399-1423  
 FAX: 702-399-1431  
 8am-5pm Pacific Time  
 Monday through Friday

Website Address  
<http://www.dynojet.com>

The manufacturer and seller make no warranties express or implied which extend beyond the description of the goods contained herein. Any description of this product is for the purpose of identifying it and shall not be deemed to create an express warranty.



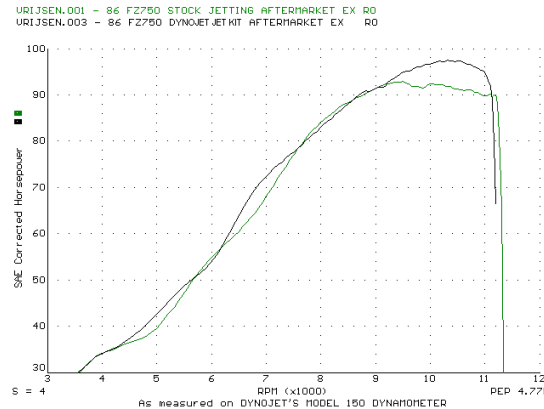
**E4149.001**

European Models Only

1989-96 Yamaha XTZ 750

**Stage 1**

For mildly tuned machines using the stock airbox with air box lid removed using stock or K&N filter.  
 K&N Filter# N/A



*This graph shows a typical gain with a Dynojet jet kit.*

**WARNING**

**NO SMOKING!  
 NO OPEN FLAME!  
 WHILE INSTALLING  
 YOUR DYNOJET KIT**

Parts List		
2	Main Jets	YJ140
2	Main Jets	YJ144
4	Main Jet O-Rings	YJ-0
2	Fuel Needles	DNO356
2	Slide Springs	DSP007
2	Adjusting Washers	DW0001
2	E-clips	DE0001

## STAGE ONE INSTRUCTIONS

**DYNOJET**

E4149.001

1. Remove the vacuum slide from the carbs. Remove the stock needles & spacers, noting the order of assembly (Fig. A).
2. Install the Dynojet needles on groove #4 , using all stock spacers (Fig. A). Install the Dynojet washer above the E-clip.
3. Remove the stock main jets and replace with the Dynojet main jets provided. Use the YJ140 main jets with stock exhaust pipe, or use the YJ144 main jets with aftermarket header or slip-on with high flowing baffles. Be sure that the jet you are changing is the main jet.
4. Install the Dynojet slide spring in place of the stock spring, making sure the spring is aligned properly.
5. Locate the fuel mixture screw (Fig. B). Carefully turn mixture screws clockwise until they seat, turn out 2-1/2 turns.

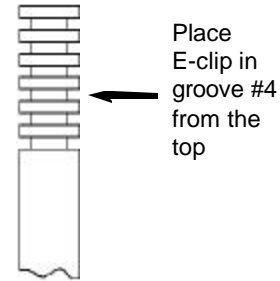


Fig. A

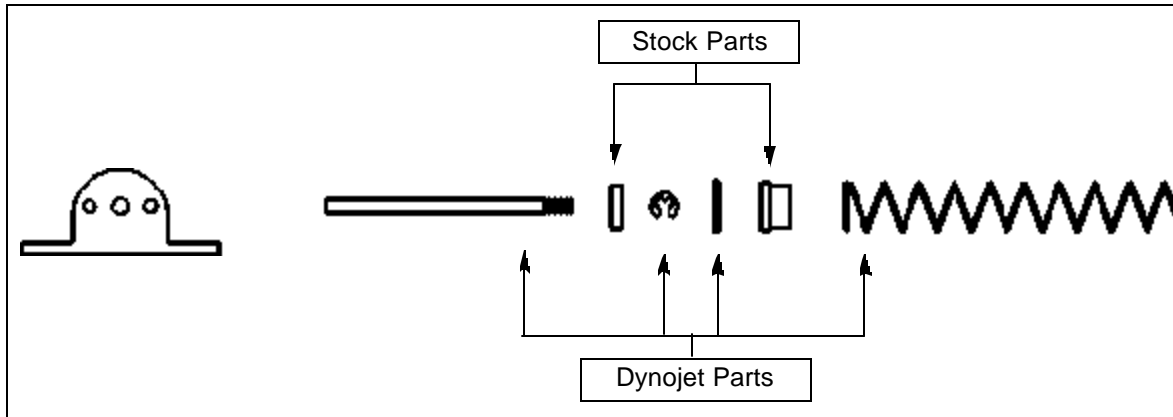


Fig. B

