

Thank you for purchasing this Dynojet kit. This kit has been developed for a motorcycle which is set to the parameters listed at the right in the "Stage" description. If your motorcycle does not meet any of these parameters please check with Dynojet before installation. For technical assistance contact your Dynojet distributor or call Dynojet U.S.A. (800)-992-4993

2191 Mendenhall Dr. Suite 105
 North Las Vegas, NV 89031
 TEL: 702-399-1423
 FAX: 702-399-1431
 8am-5pm Pacific Time
 Monday through Friday

Website Address
<http://www.dynojet.com>

The manufacturer and seller make no warranties express or implied which extend beyond the description of the goods contained herein. Any description of this product is for the purpose of identifying it and shall not be deemed to create an express warranty.



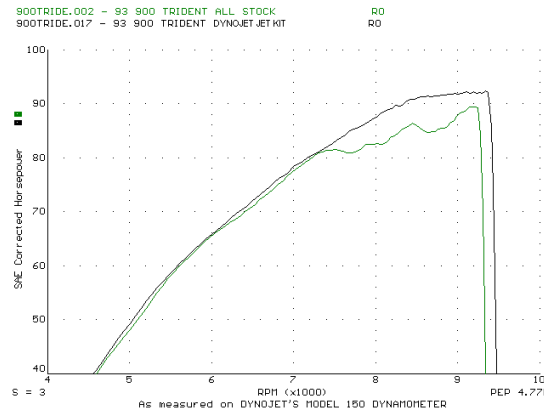
E5102UK.004

UK Models Only

*1992-97 Triumph 900 Trident & Sprint
 1992-96 Daytona & Speed Triple*

Stage 1

For mildly tuned machines using the stock airbox with stock or K&N filter. May also be used with a good aftermarket exhaust system
 K&N filter #TB-0002



This graph shows a typical gain with a Dynojet jet kit.

WARNING

**NO SMOKING!
 NO OPEN FLAME!
 WHILE INSTALLING
 YOUR DYNOJET KIT**

Parts List

3	Main Jets	DJ116
3	Main Jets	DJ120
3	Main Jets	DJ124
1	Slide Drill	DD #44
3	Fuel Needles	DNO332
3	Adjusting Washers	DW0001
3	E-clips	DE0001
3	Emulsion Tubes	DET002

STAGE ONE INSTRUCTIONS

DYNOJET
E5102UK.004

1. Remove the vacuum slide from the carbs. Remove the stock needles & spacers, noting the order of assembly. With the slide drill (DD #44) supplied, drill the stock slide lift hole and drill an auxiliary lift hole in the location shown in Fig. A. Due to model variations your slide lift holes may already be larger than the drill supplied.
2. Remove the main jet, tap lightly on the emulsion tube to push into the carb venturi. Install the Dynojet emulsion tube into the carbs (Fig. B)
3. Install the Dynojet main jets provided. Use the DJ120 main jets with stock exhaust pipe, or use the DJ124 main jets with aftermarket header or slip-on with high flowing baffles. Be sure that the jets you are changing are the main jets.
4. Install the Dynojet needles on groove #4, using all stock spacers (Fig. A). Install the Dynojet washer above the E-clip.
5. Locate the fuel mixture screw (Fig. C). Carefully turn mixture screw clockwise until seated, then back out 2-1/2 turns.

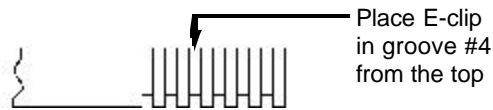


Fig. A

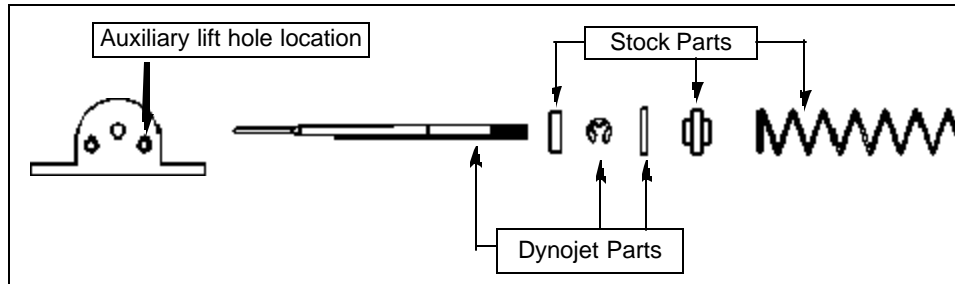


Fig. C

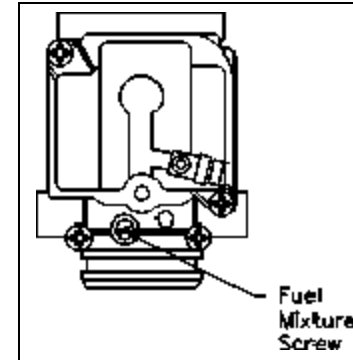


Fig. B

