

Thank you for purchasing this Dynojet kit. This kit has been developed for a motorcycle which is set to the parameters listed at the right in the "Stage" description. If your motorcycle does not meet any of these parameters, please check with Dynojet before installation. For technical assistance contact your Dynojet distributor or call Dynojet U.S.A. (800)-992-4993



E8110.001

European models only

1998 Buell S1W & S3

Keihin CV Carb

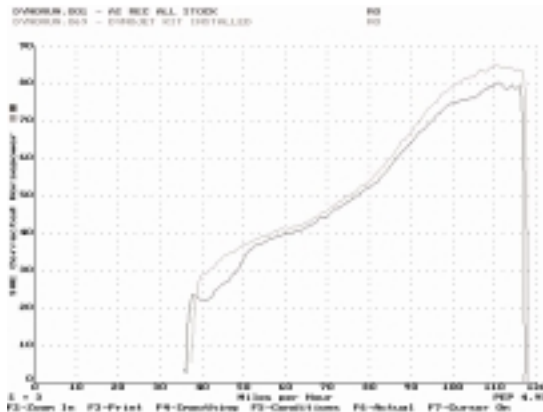
2191 Mendenhall Dr. Suite 105
 North Las Vegas, NV 89031
 TEL: 702-399-1423
 FAX: 702-399-1431
 8am-5pm Pacific Time
 Monday through Friday

Website Address

<http://www.dynojet.com>

The manufacturer and seller make no warranties express or implied which extend beyond the description of the goods contained herein. Any description of this product is for the purpose of identifying it and shall not be deemed to create an express warranty.

For mildly tuned machines using the stock or high flow airbox and or filter. May also be used with a good aftermarket exhaust system.



This graph shows a typical gain with a Dynojet jet kit.

WARNING

**NO SMOKING!
 NO OPEN FLAME!
 WHILE INSTALLING
 YOUR DYNOJET KIT**

Parts List

1	Main Jet	DJ165
1	Main Jet	DJ175
1	Main Jet	DJ185
1	Main Jet	DJ195
1	Slide Drill	DD #29
1	Fuel Needle	DNO891
3	Adjusting Washers	DW0001
1	E-Clip	DE0001
1	Slide Spring	DSP088
1	Emulsion Tube	DET001
1	Slow Jet	DJSJ045

STAGE ONE INSTRUCTIONS

DYNOJET

E8110.001

1. Remove the vacuum slide from the carb. Remove the stock needle & spacers, noting the order of assembly. Locate the slide lift hole using Fig. A, with the slide drill (DD #29) supplied, enlarge your slide lift hole.
2. Install the Dynojet needle on groove #5. Use all stock spacers (Fig. A). Install the Dynojet washers above the E-clip.
3. Install the Dynojet spring in place of the stock spring, making sure the spring is aligned properly.
4. Place the carb upside down on the bench. Remove the float bowl. Remove stock main jet and remove the emulsion tube (Fig. B), sometimes referred to as the main jet holder. Replace the stock emulsion tube with the Dynojet tube provided. When the Dynojet emulsion tube is fully seated there will still be threads visible. Install the Dynojet main jet provided. Use the DJ165 main jet with a completely stock bike. Use the DJ175 main jet when running a stock exhaust and aftermarket air box. Use the DJ185 main jet when running an aftermarket exhaust and stock or aftermarket air box.
5. Install the slow jet (DJSJ045) provided. Re-install the float bowl.
6. Locate the fuel mixture screw (Fig. B). Carefully turn mixture screw clockwise until seated, turn out 3 turns.

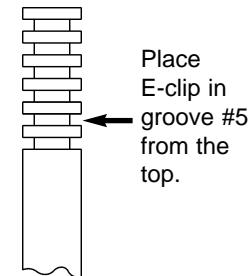


Fig. A

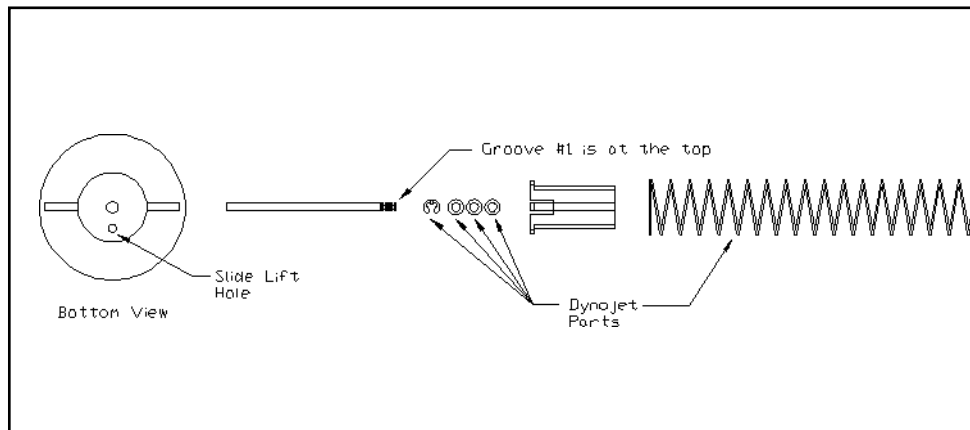


Fig. B

