

# Q109.001

## 2000-2005 Honda Rubicon 500 4X4

### Stage 1

For mildly tuned machines using the stock airbox with stock or aftermarket filter. May also be used with a good aftermarket exhaust system.

<b><i>Parts List</i></b>		
1	Main Jet	DJ140
1	Main Jet	DJ142
1	Main Jet	DJ144
1	Main Jet	DJ146
1	Main Jet	DJ148
1	Main Jet	DJ150
1	Main Jet	DJ155
1	Main Jet	DJ160
1	Fuel Needle	DNO188
1	Adjusting Washer	DW0001
1	E-Clip	DE0001

## STAGE ONE INSTRUCTIONS

1. Remove vacuum slide from carb. Remove stock needle & spacers, noting order of assembly(Fig.A).
2. Install Dynojet needle on groove #4 from the top for applications below 6000 feet, groove #3 for above 6000 feet, using all stock spacers. Install the Dynojet washer above the E-clip.
3. Remove stock main jet (Fig.B) and replace with Dynojet main provided. If using the stock exhaust use the DJ148 below 3000 feet, DJ144 from 3000 to 6000 feet and DJ140 above 6000 feet. If using an aftermarket exhaust with a quiet core baffle use the DJ150 below 3000 feet, DJ146 from 3000 to 6000 feet and DJ144 above 6000 feet. If using an aftermarket exhaust with a high flow baffle use the DJ155 below 3000 feet, DJ150 from 3000 to 6000 feet and DJ146 above 6000 feet. Be sure that the jet you are changing is the main jet.
4. Locate the fuel mixture screw (Fig.B). Using a flat blade screwdriver, turn the mixture screw clockwise until it seats, then turn out 3-1/2 turns .

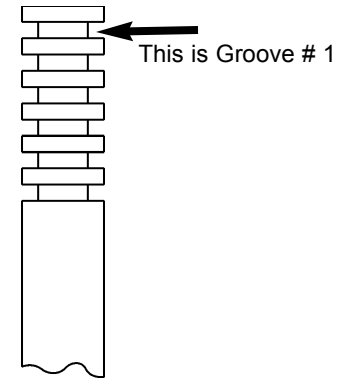


Fig. A

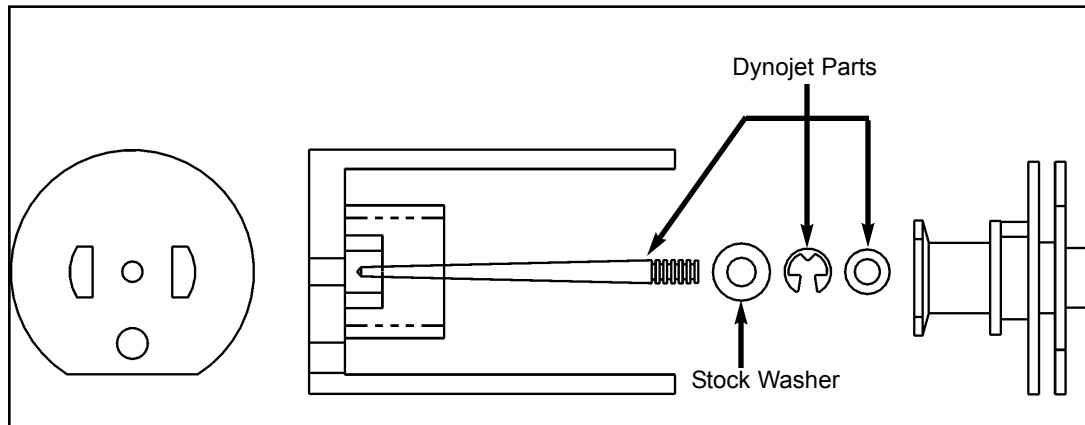


Fig.B

