

# Q112.001

## 2003-2005 Honda

### 650 Rincon

#### Stage 1

For mildly tuned machines using the stock airbox with stock or aftermarket filter. May also be used with a good aftermarket exhaust system.

<i><b>Parts List</b></i>		
1	Main Jet	DJ134
1	Main Jet	DJ136
1	Main Jet	DJ138
1	Main Jet	DJ140
1	Main Jet	DJ142
1	Main Jet	DJ144
1	Main Jet	DJ146
1	Main Jet	DJ148
1	Main Jet	DJ150
1	Fuel Needle	DNO190
1	Slide Spring	DSP012
1	Adjusting Washer	DW0001
1	E-Clip	DE0001

# STAGE ONE INSTRUCTIONS

1. Remove vacuum slide from the carb. Remove stock needles & spacers, noting order of assembly (Fig. A).
2. Install Dynojet needle on groove #2 for applications below 5000 feet, groove #1 for above 5000 feet, using all stock spacers. Install the Dynojet washer above the E-clip.
3. Install Dynojet slide spring (DSP012) in place of the stock slide spring.
4. Remove stock main jet and replace with Dynojet main provided. Use the DJ144 below 3000 feet, DJ140 from 3000 to 6000 feet and DJ136 above 6000 feet. When using an aftermarket exhaust with a high flow baffle, Use the DJ148 below 3000 feet, DJ144 from 3000 to 6000 feet and the DJ140 above 6000 feet.
5. Locate the Fuel Mixture Screw (Fig.B). Using a flat blade screwdriver, turn the mixture screw clockwise until it seats, then turn out 3 turn, 2.5 turns above 5000 feet.

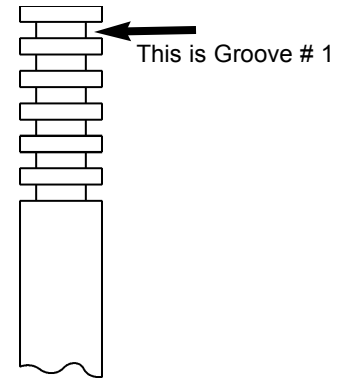


Fig. A

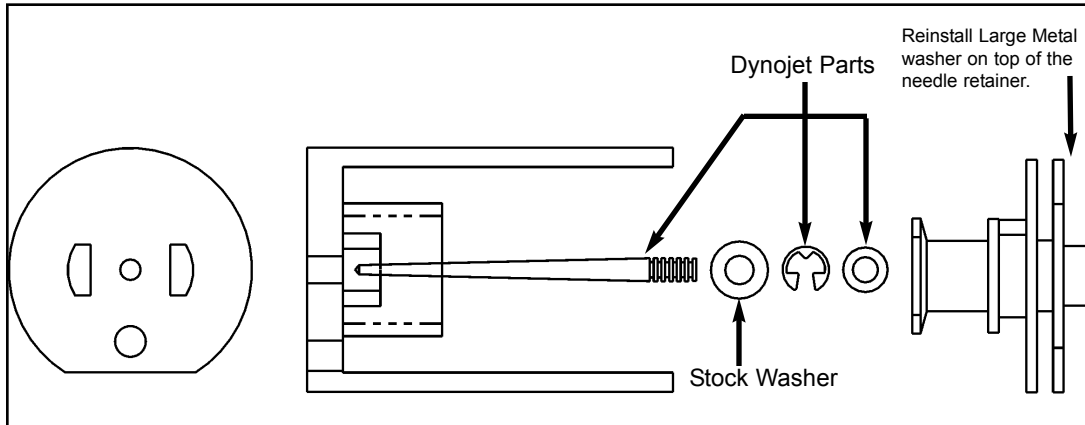


Fig.B

