

Q216.002
2004-2005 Kawasaki
700 Prairie
Stage 1

For mildly tuned machines using the stock airbox with stock or aftermarket filter. May also be used with a good aftermarket exhaust system.
K&N Filter # KA-6503

<i>Parts List</i>		
1	Main Jet	DJ120
1	Main Jet	DJ122
1	Main Jet	DJ124
1	Main Jet	DJ126
1	Main Jet	DJ128
1	Main Jet	DJ130
1	Main Jet	DJ132
1	Main Jet	DJ134
1	Main Jet	DJ136
1	Main Jet	DJ138
1	Main Jet	DJ140
1	Main Jet	DJ142
1	Main Jet	DJ144
2	Fuel Needles	DNO460
4	Adjusting Washers	DW0001
2	E-Clips	DE0001

STAGE ONE INSTRUCTIONS

1. Remove vacuum slides from carbs. Remove stock needles & spacers, noting order of assembly (Fig.A).
2. Install Dynojet needles on groove #5 for applications below 5000 feet, groove #4 for above 5000 feet, using all stock spacers. Install the Dynojet washers above the E-clip, 2 per needle (Fig.A).
3. Remove stock main jets and replace with Dynojet main jets provided. Use the DJ132 in the front carb and the DJ136 in the rear carb below 3000 feet, DJ128 in the front carb and the DJ132 in the rear carb from 3000 to 6000 feet and DJ124 in the front carb and the DJ128 in the rear carb above 6000 feet. When using an aftermarket exhaust with a high flow baffle, Use the DJ136 in the front carb and the DJ140 in the rear carb below 3000 feet, DJ132 in the front carb and the DJ136 in the rear carb from 3000 to 6000 feet and the DJ128 in the front carb and the DJ132 in the rear carb above 6000 feet. *NOTE: When using a K&N filter you will need to install a main jet that is 2 points larger. ie: if you are using the DJ132 main jets you will need to install the DJ134 main jets.*
4. Locate the Fuel Mixture Screws (Fig.B). Using a flat blade screwdriver, turn the mixture screws clockwise until seated, then turn out 3 turns, 2.5 turns above 5000 feet.

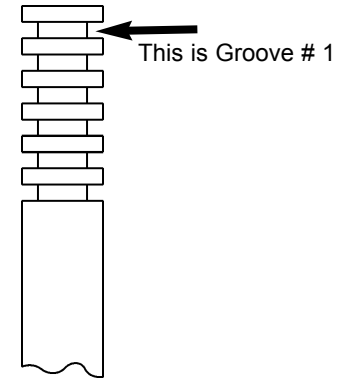


Fig.A

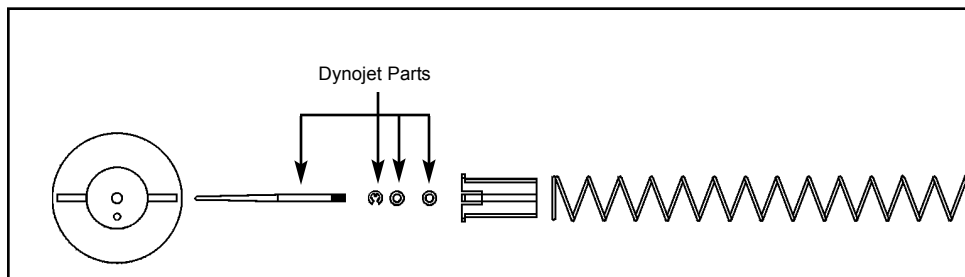


Fig.B

