

Thank you for purchasing this Dynojet jet kit. This jet kit has been developed for a motorcycle which is set to the parameters listed at the right in the "Stage" description. If your motorcycle does not meet any of these parameters please check with Dynojet before installation. For technical assistance call (800)-992-4993

2191 Mendenhall Dr. Suite 105  
 North Las Vegas, NV 89081  
 TEL: 702-399-1423  
 FAX: 702-399-1431  
 8am-5pm Pacific Time  
 Monday through Friday

Website Address  
<http://www.dynojet.com>

The manufacturer and seller make no warranties express or implied which extend beyond the description of the goods contained herein. Any description of this product is for the purpose of identifying it and shall not be deemed to create an express warranty.

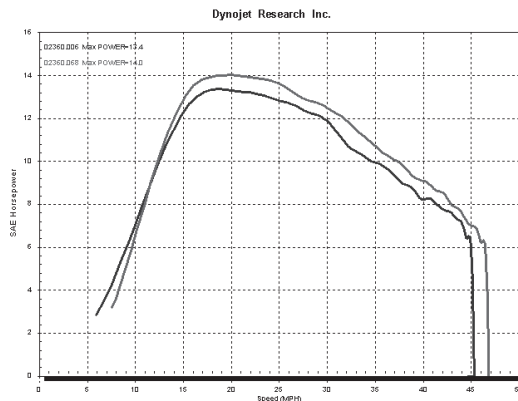


**Q222.001**

**2012-2016 Kawasaki  
 Brute Force 300**

**STAGE 1**

For mildly tuned machines using the stock airbox with stock or aftermarket filter. May also be used with a good aftermarket exhaust system.



*This graph shows a typical gain with a Dynojet jet kit.*

# WARNING

**NO SMOKING!  
 NO OPEN FLAME!  
 WHILE INSTALLING  
 YOUR JET KIT**

<b>PARTSLIST</b>		
1	Main Jet	DJ098
1	Main Jet	DJ102
1	Main Jet	DJ106
1	Main Jet	DJ110
1	Main Jet	DJ114
1	Fuel Needle	DNO712
1	Slide Spring	DSP031
2	Adjusting Washers	DW0001
1	E-Clip	DE0001
1	Mixture Screw Tool	DT012
1	Plug Drill	DD 5/32
1	Screw	DS0001

## STAGE ONE INSTRUCTIONS

**Dynojet**

**Q222.001**

1. Remove vacuum slide from carb. Remove stock needle & spacers, noting order of assembly (Fig.A).
2. Install Dynojet needle on groove #3 from the top for applications below 5000 feet, groove #2 for above 5000 feet, using all stock spacers. Install the Dynojet washers above the E-clip (Fig.A). Install the Dynojet slide spring (DSP031) in-place of the stock slide spring.
3. Remove stock main jet and replace with Dynojet main jet provided. Use the DJ106 below 3000 feet, DJ102 from 3000 to 6000 feet and DJ098 above 6000 feet. When using an aftermarket exhaust with a high flow baffle, use the DJ110 below 3000 feet, DJ106 from 3000 to 6000 feet and the DJ102 above 6000 feet.
4. Locate the Fuel Mixture Screw (Fig.B). If you see a "D" shaped screw head at Fig.B, proceed to the adjusting procedure. If there is a plug at the mixture screw location in Fig.B, use the 5/32 drill bit provided to carefully drill through the plug. **NOTE: The mixture screw is directly underneath this plug, be ready to pull back on the drill the instant you break through.** Use the screw provided to secure and remove this plug. Using the mixture screw tool (DT012), carefully turn the mixture screw clockwise until lightly seated, then turn out 2.5 turns, 2 turns above 5000 feet.

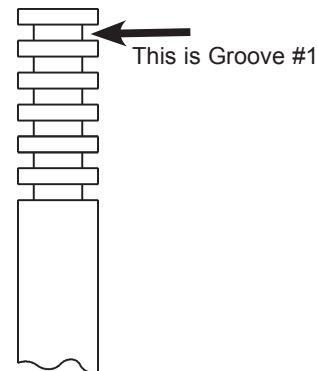


Fig. A

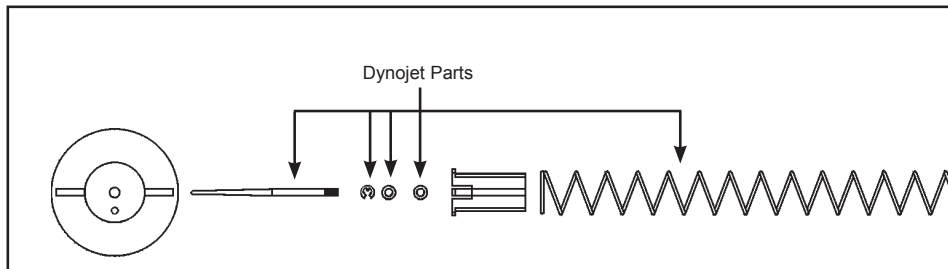


Fig. B

