

Q303.001
1988-99 SUZUKI
LT & LTF250
STAGE 1

For mildly tuned machines using the stock airbox with stock or aftermarket filter. May also be used with a good aftermarket exhaust system. K&N Filter#SU-2588.

STAGE 2

For mildly tuned machines using the stock airbox with airbox lid removed, using stock filter or aftermarket filter. May also be used with a good aftermarket exhaust system. K&N Filter#SU-2588.

PARTS LIST		
1	Main Jet	DJ108
1	Main Jet	DJ112
1	Main Jet	DJ116
1	Main Jet	DJ118
1	Main Jet	DJ122
1	Main Jet	DJ126
1	Fuel Needle	DNO480
1	Adjusting Washer	DW0001
1	E-Clip	DE0001

STAGE ONE INSTRUCTIONS

1. Remove vacuum slide from carbs. Remove stock needles & spacers, noting order of assembly.
2. Remove stock main jet. Replace with Dynojet Main Jets provided. If you are running the stock exhaust use the DJ116 below 3000 feet, DJ112 from 3000 to 6000 feet and DJ108 above 6000Feet. Be sure that the jet you are changing is the main jet.
3. Install Dynojet needles on groove# 3, (Fig. A). Install the Dynojet washer above the E-clip.
4. Locate the Fuel Mixture Screw (Fig.B). Using a flat blade screwdriver, turn the mixture screw clockwise until it seats, then turn out 1 1/2 turns .

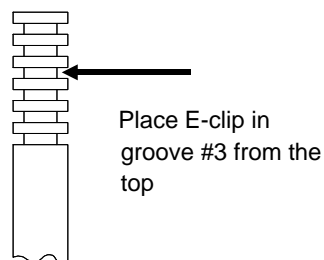


Fig. A

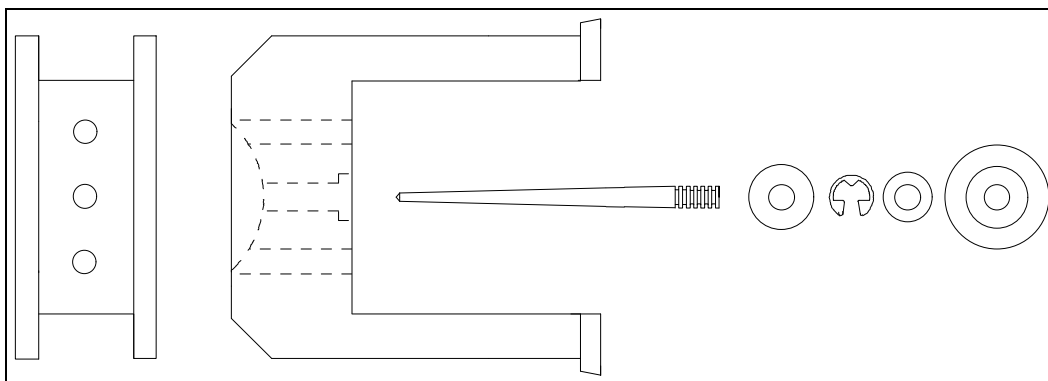
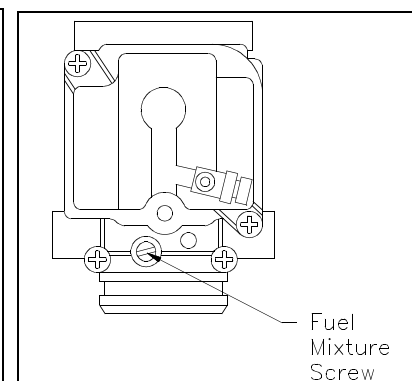


Fig. B



STAGE TWO INSTRUCTIONS

STAGE TWO REQUIRES AIR BOX LID REMOVAL.

1. Remove vacuum slide from carbs. Remove stock needles & spacers, noting order of assembly.
2. Remove stock main jet. Replace with Dynojet Main Jets provided. If you are running the stock exhaust use the DJ126 below 3000 feet, DJ122 from 3000 to 6000 feet and DJ118 above 6000Feet. Be sure that the jet you are changing is the main jet.
3. Install Dynojet needles on groove# 3, (Fig. A). Install the Dynojet washer above the E-clip.
4. Locate the Fuel Mixture Screw (Fig.B). Using a flat blade screwdriver, turn the mixture screw clockwise until it seats, then turn out 1 1/2 turns .