

Q305.001
1998-2001 SUZUKI LTF500

STAGE 1

For mildly tuned machines using the stock airbox, with stock or aftermarket filter. May also be used with a good aftermarket exhaust system. K&N Filter # SU-5098.

PARTS LIST		
1	Main Jet	DJ118
1	Main Jet	DJ120
1	Main Jet	DJ122
1	Main Jet	DJ124
1	Main Jet	DJ126
1	Main Jet	DJ128
1	Main Jet	DJ132
1	Fuel Needle	DNO307
1	Adjusting Washer	DW0001
1	E-Clip	DE0001

STAGE ONE INSTRUCTIONS

1. Remove vacuum slide from carbs. Remove stock needles & spacers, noting order of assembly.
2. Remove stock main jet. Replace with Dynojet Main Jets provided. If you are running the stock exhaust use the DJ126 below 3000 feet, DJ122 from 3000 to 6000 feet and DJ118 above 6000 feet. If running an aftermarket exhaust with a high flow baffle use the DJ132 below 3000 feet, the DJ128 from 3000 to 6000 feet and the DJ124 above 6000 feet Be sure that the jet you are changing is the main jet.
3. Install Dynojet needle on groove# 2 for applications below 5000 feet, groove #1 for above 5000 feet, using all stock spacers. Install the Dynojet washer above the E-clip.
NOTE: You may need to enlarge the plastic spacer that is under the e-clip with a 7/64 drill, in order for it to fit properly.
4. Locate the Fuel Mixture Screw (Fig.B). Using a flat blade screwdriver, turn the mixture screw clockwise until it seats, then turn out 3.5 turns .

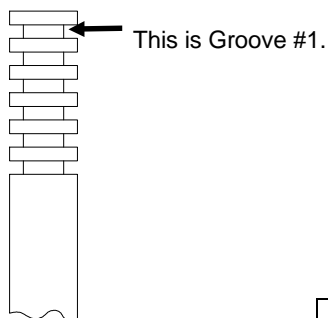


Fig. A

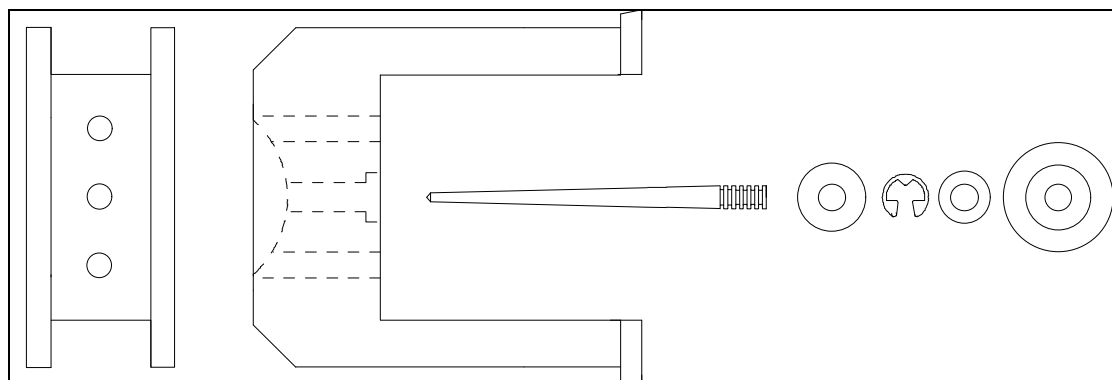


Fig. B

