

**Q308.001**  
**2000-2001 SUZUKI**  
**LT & LTF250**

**STAGE 1**

***For mildly tuned machines using the stock airbox with stock or aftermarket filter. May also be used with a good aftermarket exhaust system. K&N Filter # SU-2588.***

PARTS LIST		
1	Main Jet	DJ096
1	Main Jet	DJ098
1	Main Jet	DJ100
1	Main Jet	DJ102
1	Main Jet	DJ104
1	Main Jet	DJ106
1	Main Jet	DJ108
1	Main Jet	DJ110
1	Fuel Needle	DNO490
1	Adjusting Washer	DW0001
1	Slide Spring	DSP005
1	Needle Spring	DSP77
1	E-Clip	DE0001

## STAGE ONE INSTRUCTIONS

1. Remove the vacuum slide from the carb. Remove the stock needles & spacers, noting order of assembly (Fig.A).
2. Install the Dynojet needle on groove#3 for applications below 3000 feet, groove #2 for above 3000 feet, using all stock spacers. Install the Dynojet slide spring (DSP005) in place of the stock slide spring. **NOTE:** The DSP77 spring does not have to be installed at this time. It is supplied in case the stock spring is misplaced.
3. Remove the stock main jet and replace with the Dynojet main jet provided. If you are running the stock exhaust use the DJ104 below 3000 feet, DJ100 from 3000 to 6000 feet and DJ096 above 6000 feet. If you are using an aftermarket exhaust with a high flow baffle use the DJ108 below 3000 feet, DJ104 from 3000 to 6000 feet and DJ100 above 6000 feet.
4. Locate the Fuel Mixture Screw(Fig. B). Using a flat blade screwdriver, turn the mixture screw clockwise until it seats, then turn out 2.5 turns if below 3000 feet or 2 turns when above 3000 feet.

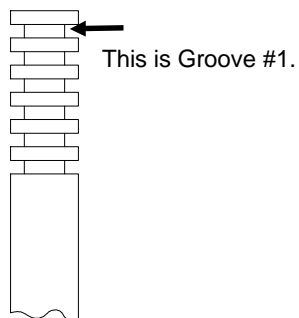


Fig. A

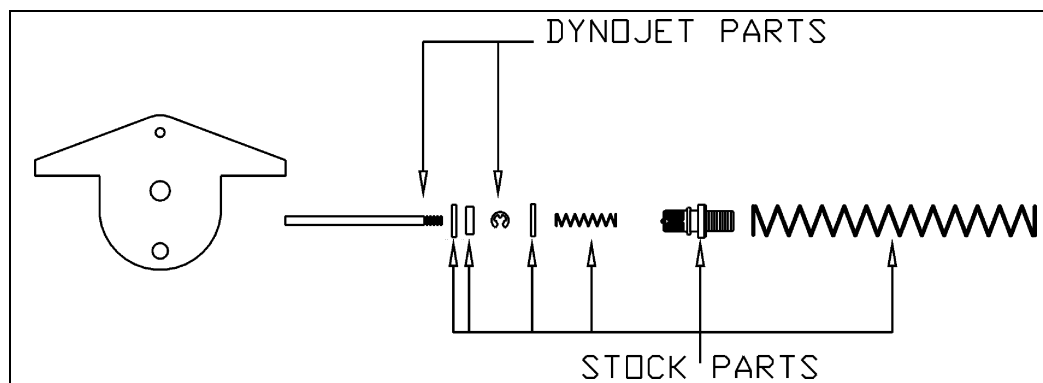
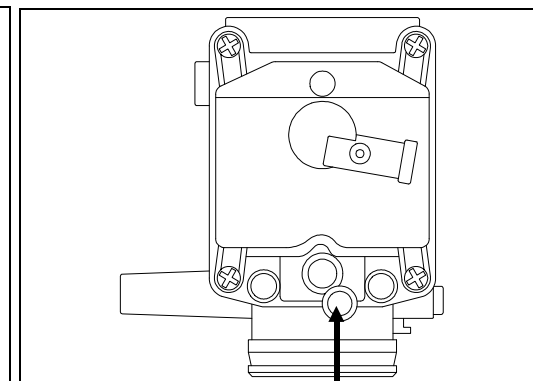


Fig. B



FUEL MIXTURE SCREW