

Q414.001

2001-2005 Yamaha 660R

Raptor

Stage 2

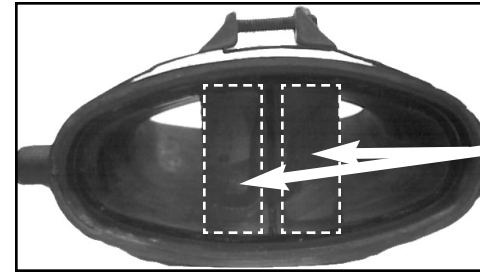
For mildly tuned machines using a modified air box, with a stock or aftermarket filter. May also be used with a good aftermarket exhaust system.

<i>Parts List</i>		
1	Main Jet	DJ136
1	Main Jet	DJ138
1	Main Jet	DJ140
1	Main Jet	DJ142
1	Main Jet	DJ144
1	Main Jet	DJ146
1	Main Jet	DJ148
1	Main Jet	DJ150
2	Fuel Needles	DNO660
2	Slide Springs	DSP026
2	Needle Springs	DSP77
2	Adjusting Washers	DW0001
2	E-Clips	DE0001

STAGE 2 INSTRUCTIONS

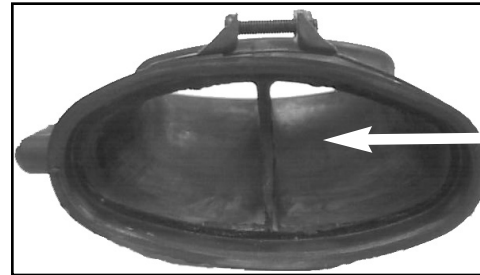
1. Remove the intake snorkle from the air box lid. With a sharp knife remove the two flaps shown in Fig.C. The intake snorkle should look like Fig.D after the flaps are removed. **NOTE:** This step must be performed in-order for the jet kit to function properly.
2. Remove the vacuum slides from the carbs. Remove the stock needles & spacers, noting the order of assembly(Fig.A).
3. Install the Dynojet needles on groove #4 from the top, using all stock spacers. Install the Dynojet slide springs (DSP026) in place of the stock slide springs . **NOTE:** The DSP77 springs do not have to be used, they are supplied in case the stock springs are misplaced. After installing the slides in the carbs be sure to check slide movement manually before air box installation.
4. Remove the stock main jets. Replace with the Dynojet main jets provided. If you are running the stock exhaust use the DJ142 in the left carb and the DJ144 in the right carb below 3000 feet, DJ140 in the left carb and DJ142 in the right carb from 3000 to 6000 feet and DJ138 in the left carb and DJ140 in the right carb above 6000Feet. If you are running an aftermarket slip-on exhaust with a high flow baffle, use the DJ144 in the left carb and the DJ146 in the right carb below 3000 feet, DJ142 in the left carb and DJ144 in the right carb from 3000 to 6000 feet and DJ140 in the left carb and DJ142 in the right carb above 6000 feet. If you are running a full aftermarket exhaust with a high flow baffle, use the DJ146 in the left carb and the DJ148 in the right carb below 3000 feet, DJ144 in the left carb and DJ146 in the right carb from 3000 to 6000 feet and DJ142 in the left carb and DJ144 in the right carb above 6000 feet. Be sure that the jet you are changing is the main jet.
5. Locate the fuel mixture screws (Fig. B). Carefully turn mixture screws clockwise until seated, then back out 3 turns.

Fig.C



Remove these flaps from the snorkle. The jet kit **will not** work properly with these in place.

Fig.D



Your snorkle should look like this after modification.

Fig.A

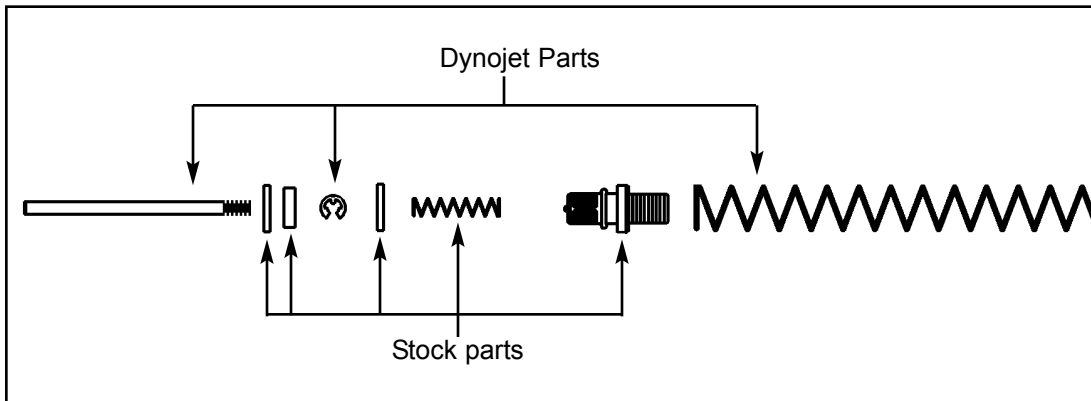
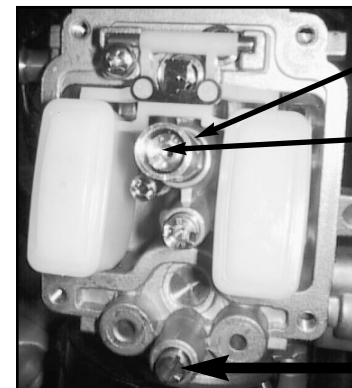


Fig.B



The cup around the main jet must be reinstalled.

Main Jet Location

Mixture Screw Location