

Q428.001
2007-2009 Yamaha
250 Big Bear
Stage 1

For mildly tuned machines using the stock airbox with stock or aftermarket filter. May also be used with a good aftermarket exhaust system.

<i>Parts List</i>		
1	Main Jet	DJ084
1	Main Jet	DJ088
1	Main Jet	DJ092
1	Main Jet	DJ096
1	Main Jet	DJ100
1	Main Jet	DJ104
1	Fuel Needle	DNO490
1	Slide Spring	DSP005
1	Needle Spring	DSP77
1	Adjusting Washer	DW0001
1	E-Clip	DE0001

STAGE ONE INSTRUCTIONS

Q428.001

1. Remove vacuum slide from carb. Remove stock needle & spacers, noting order of assembly (Fig.A).
2. Install Dynojet needle on groove #2 for applications below 5000 feet, groove #1 for above 5000 feet, using all stock spacers (Fig.A). Install the Dynojet slide spring (DSP005) in place of the stock slide spring.
NOTE: The DSP77 spring does not have to be used, it is supplied in case the stock spring is misplaced. The Dynojet washer (DW0001) does not need to be installed at this time, it is for half step adjustments. After installing the slides in the carbs, be sure to check slide movement manually before airbox installation.
3. Remove stock main jet and replace with the Dynojet main jet provided. Use the DJ096 below 3000 feet, DJ92 from 3000 to 6000 feet and DJ088 above 6000 feet. When using an aftermarket exhaust with a high flow baffle, use the DJ100 below 3000 feet, DJ096 from 3000 to 6000 feet and the DJ092 above 6000 feet.
4. Locate the Fuel Mixture Screw (Fig.B). Using a flat blade screwdriver, turn the mixture screw clockwise until it seats, then turn out 3.5 turns, 3 turns above 5000 feet.

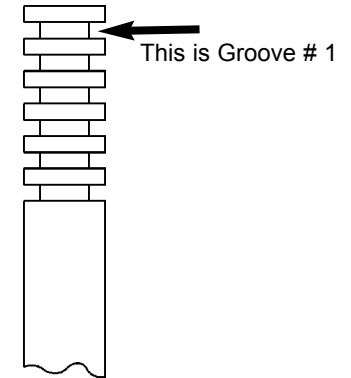


Fig.A

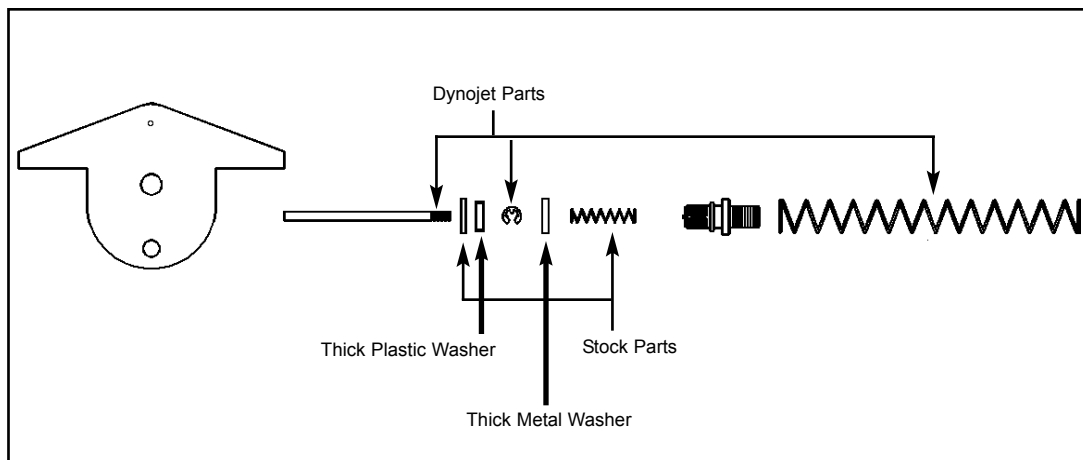


Fig.B

