

Q507.001

2000-2001 Polaris Sportsman 335

Stage 1

For mildly tuned machines using the stock airbox with stock or aftermarket filter. May also be used with a good aftermarket exhaust system.

<i>Parts List</i>		
1	Main Jet	DJ146
1	Main Jet	DJ150
1	Main Jet	DJ155
1	Main Jet	DJ160
1	Main Jet	DJ165
1	Main Jet	DJ170
1	Fuel Needle	DNO466
1	Adjusting Washers	DW0001
1	E-Clip	DE0001

STAGE ONE INSTRUCTIONS

1. Remove vacuum slide from the carb. Remove stock needles & spacers, noting order of assembly (Fig. A).
2. Install Dynojet needle on groove #3 for applications below 3000 feet, groove #2 for above 3000 feet, using all stock spacers. Install the Dynojet washer above the E-clip.
3. Remove stock main jet. If you are running the stock exhaust use the DJ160 below 3000 feet, DJ155 from 3000 to 6000 feet and DJ150 above 6000 feet. If you are running an aftermarket exhaust, use the DJ165 below 3000 feet, DJ160 from 3000 to 6000 feet and DJ155 above 6000 feet. Be sure that the jet you are changing is the main jet (Fig. B).
4. Locate the Fuel Mixture Screw (Fig. B). Using a flat blade screwdriver, turn the mixture screw clockwise until it seats, then turn out 3 turns below 3000 feet or 2 1/2 above 3000 feet.

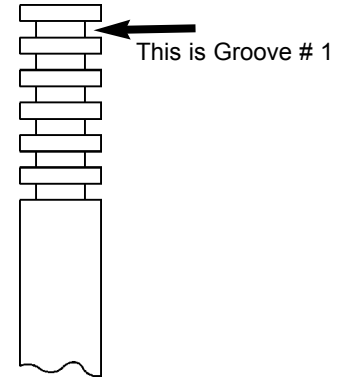


Fig.A

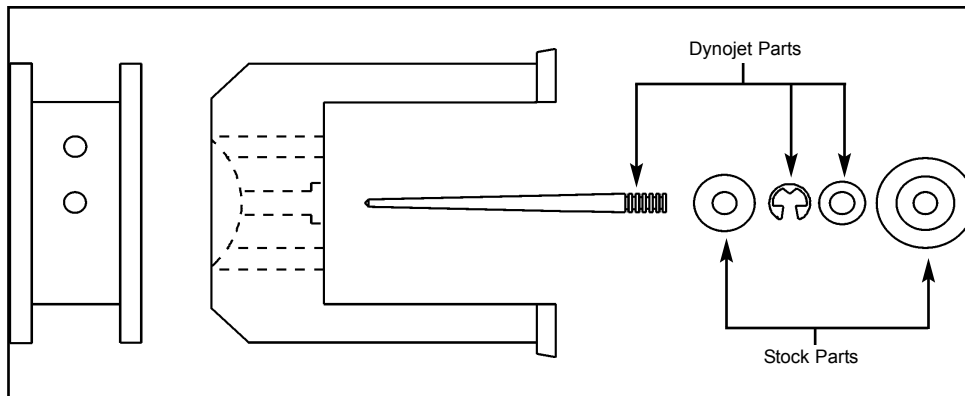


Fig.B

