

Q511.001

2000-2002 Polaris Magnum 325

Stage 1

For mildly tuned machines using the stock airbox with stock or aftermarket filter. May also be used with a good aftermarket exhaust system.

K&N Filter # N/A

Parts List		
1	Main Jet	DJ126
1	Main Jet	DJ128
1	Main Jet	DJ130
1	Main Jet	DJ132
1	Main Jet	DJ134
1	Main Jet	DJ136
1	Main Jet	DJ138
1	Main Jet	DJ140
1	Main Jet	DJ142
1	Fuel Needle	DNO466
1	Adjusting Washer	DW0001
1	E-clips	DE0001

STAGE ONE INSTRUCTIONS

Q511.001

1. Remove vacuum slide from the carb. Remove stock needle & spacers, noting order of assembly (Fig. A).
2. Install Dynojet needle on groove #4 for applications below 3000 feet, groove #3 for above 3000 feet, using all stock spacers. Install the Dynojet washer above the E-clip.
3. Remove stock main jet and replace with Dynojet main jet provided. If you are running the stock exhaust use the DJ136 below 3000 feet, DJ132 from 3000 to 6000 feet and DJ128 above 6000 feet. If you are running an aftermarket exhaust with a Quiet baffle, use the DJ138 below 3000 feet, DJ136 from 3000 to 6000 feet and DJ132 above 6000 feet. If you are running an aftermarket exhaust with a High flow baffle, use the DJ140 below 3000 feet, DJ136 from 3000 to 6000 feet and DJ132 above 6000 feet. Be sure that the jet you are changing is the main jet.
5. Locate the Fuel Mixture Screw (Fig.B). Using a flat blade screwdriver, turn the mixture screw clockwise until it seats, then turn out 2.5 turns below 5000 feet or 2 turn above 5000 feet.

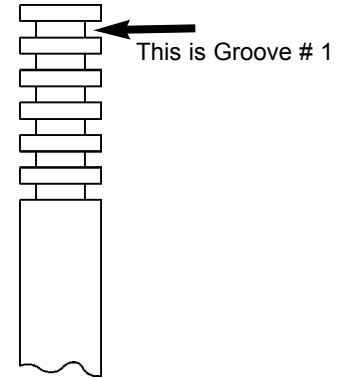


Fig.A

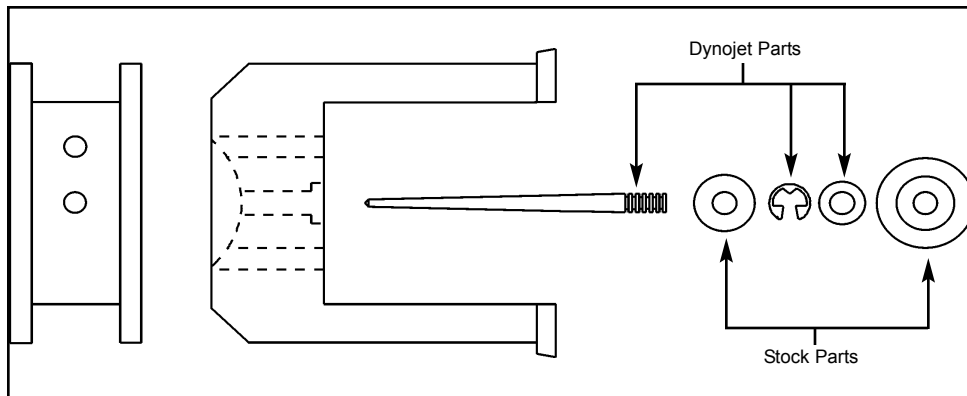


Fig.B

