

Thank you for purchasing this Dynojet jet kit. This jet kit has been developed for a motorcycle which is set to the parameters listed at the right in the "Stage" description. If your motorcycle does not meet any of these parameters please check with Dynojet before installation. For technical assistance call (800)-992-4993



Q516.001

**2003-2009 Polaris
TrailBoss 330**

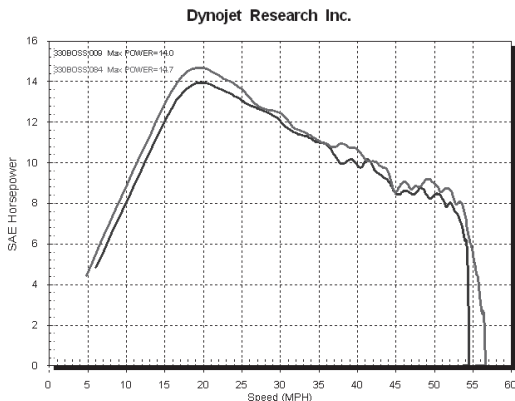
2191 Mendenhall Dr. Suite 105
North Las Vegas, NV 89081
TEL: 702-399-1423
FAX: 702-399-1431
8am-5pm Pacific Time
Monday through Friday

Website Address
<http://www.dynojet.com>

The manufacturer and seller make no warranties express or implied which extend beyond the description of the goods contained herein. Any description of this product is for the purpose of identifying it and shall not be deemed to create an express warranty.

STAGE 1

For mildly tuned machines using the stock airbox with stock or aftermarket filter. May also be used with a good aftermarket exhaust system.



This graph shows a typical gain with a Dynojet jet kit.

WARNING

**NO SMOKING!
NO OPEN FLAME!
WHILE INSTALLING
YOUR JET KIT**

PARTSLIST		
1	Main Jet	DJ102
1	Main Jet	DJ104
1	Main Jet	DJ106
1	Main Jet	DJ108
1	Main Jet	DJ110
1	Main Jet	DJ112
1	Main Jet	DJ114
1	Main Jet	DJ116
1	Main Jet	DJ118
1	Fuel Needle	DNO240
1	Slide Spring	DSP007
1	Adjusting Washer	DW0001
1	E-Clip	DE0001
1	Plug Drill	DD 5/32
1	Screw	DS0001

STAGE ONE INSTRUCTIONS

1. Remove vacuum slide from the carb. Remove stock needle & spacers, noting order of assembly (Fig. A).
2. Install Dynojet needle on groove #1 from the top, using all stock spacers. Install the Dynojet washer above the E-clip.
3. Install the Dynojet slide spring (DSP007) in place of the stock slide spring.
4. Remove stock main jet and replace with Dynojet main jet provided. If you are running the stock exhaust use the DJ112 below 3000 feet, DJ108 from 3000 to 6000 feet and DJ104 above 6000 feet. If you are running an aftermarket exhaust with a Quiet baffle, use the DJ114 below 3000 feet, DJ110 from 3000 to 6000 feet and DJ106 above 6000 feet. If you are running an aftermarket exhaust with a High flow baffle, use the DJ116 below 3000 feet, DJ112 from 3000 to 6000 feet and DJ108 above 6000 feet. Be sure that the jet you are changing is the main jet.
5. Locate the Fuel Mixture Screw (Fig.B). If you see a screw head at Fig. B then proceed to the adjusting procedure. With the 5/32 drill bit provided carefully drill through the plug. **NOTE: The mixture screw is directly underneath this plug, be ready to pull back on the drill the instant you break through.** Use screw provided to secure and remove this plug. Using a flat blade screwdriver, turn the mixture screw clockwise until it seats, then turn out 3.5 turns below 5000 feet or 3 turn above 5000 feet.

Dynojet
Q516.001

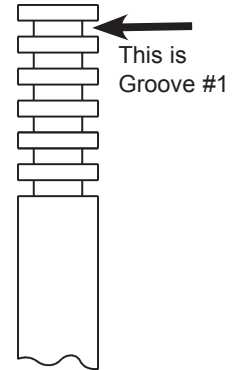


Fig. A

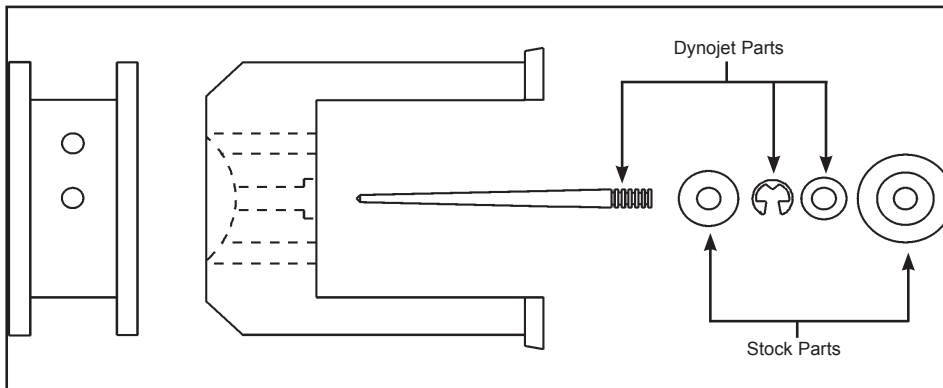


Fig.B

