

**Q527.001**  
**2008-2009 Polaris**  
**Trail Blazer 330**  
**Stage 1**

For mildly tuned machines using the stock airbox with stock or aftermarket filter. May also be used with a good aftermarket exhaust system.

<b><i>Parts List</i></b>		
1	Main Jet	DJ114
1	Main Jet	DJ118
1	Main Jet	DJ122
1	Main Jet	DJ126
1	Main Jet	DJ130
1	Fuel Needle	DNO371
1	Adjusting Washer	DW0001
1	E-Clip	DE0001
1	Plug Drill	DD 5/32
1	Screw	DS0001

## STAGE ONE INSTRUCTIONS

1. Remove vacuum slide from the carb. Remove stock needles & spacers, noting order of assembly (Fig. A).
2. Install Dynojet needle on groove #4 for applications below 3000 feet, groove #3 for above 3000 feet, using all stock spacers. Install the Dynojet washer above the E-clip.
3. Remove stock main jet and replace with Dynojet main jet provided. If you are running the stock exhaust use the DJ122 below 3000 feet, DJ118 from 3000 to 6000 feet and DJ114 above 6000 feet. If you are running an aftermarket exhaust, use the DJ126 below 3000 feet, DJ122 from 3000 to 6000 feet and DJ118 above 6000 feet. Be sure that the jet you are changing is the main jet.
5. Locate the Fuel Mixture Screw (Fig.B). If you see a screw head at Fig. B then proceed to the adjusting procedure. With the 5/32 drill bit provided carefully drill through the plug. **NOTE:** The mixture screw is directly underneath this plug, be ready to pull back on the drill the instant you break through. Use screw provided to secure and remove this plug. Using a flat blade screwdriver, turn the mixture screw clockwise until it seats, then turn out 2.5 turns below 3000 feet or 2 turns above 3000 feet.

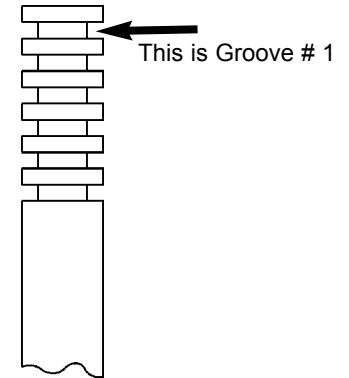


Fig.A

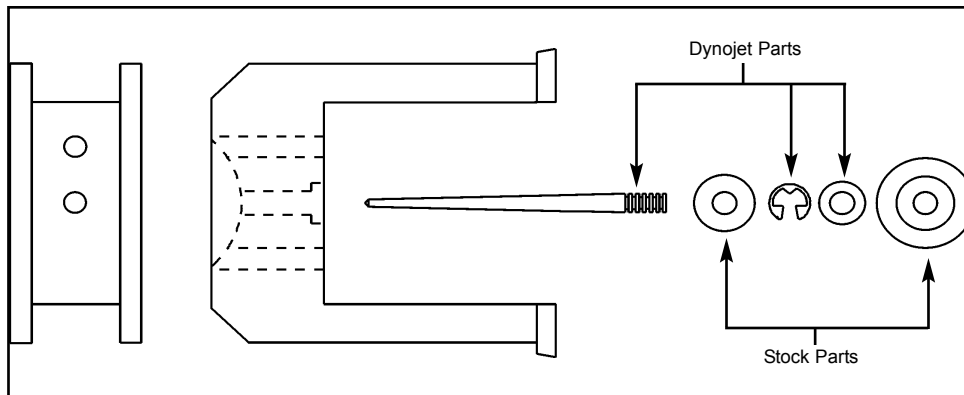


Fig.B

