

# **Q531.001**

## **2008-2013 Polaris**

### **Sportsman 500 H.O.**

#### **Stage 1**

For mildly tuned machines using the stock airbox with stock or aftermarket filter. May also be used with a good aftermarket exhaust system.

| <b><i>Parts List</i></b> |                  |         |
|--------------------------|------------------|---------|
| 1                        | Main Jet         | DJ142   |
| 1                        | Main Jet         | DJ146   |
| 1                        | Main Jet         | DJ150   |
| 1                        | Main Jet         | DJ155   |
| 1                        | Main Jet         | DJ160   |
| 1                        | Main Jet         | DJ165   |
| 1                        | Fuel Needle      | DNO198  |
| 1                        | Adjusting Washer | DW0001  |
| 1                        | E-Clip           | DE0001  |
| 1                        | Screw            | DS0001  |
| 1                        | Plug Drill       | DD 5/32 |

## STAGE ONE INSTRUCTIONS

Q531.001

1. Remove vacuum slide from the carb. Remove stock needles & spacers, noting order of assembly (Fig. A).
2. Install Dynojet needle on groove#3 for applications below 3000 feet, groove #2 for above 3000 feet, using all stock spacers. Install the Dynojet washer above the E-clip.
3. Remove the stock main jet. If you are running the stock exhaust use the DJ155 below 3000 feet, DJ150 from 3000 to 6000 feet and DJ146 above 6000 feet. If you are running an aftermarket exhaust, use the DJ160 below 3000 feet, DJ155 from 3000 to 6000 feet and DJ150 above 6000 feet. Be sure that the jet you are changing is the main jet. **NOTE: Make sure that the stock main jet spacer is reinstalled along with the Dynojet main jet.**
4. Locate the Fuel Mixture Screw (Fig.B). If you see a screw head at Fig. B then proceed to the adjusting procedure. With the 5/32 drill bit provided carefully drill through the plug. **NOTE: The mixture screw is directly underneath this plug, be ready to pull back on the drill the instant you break through.** Use the screw provided to secure and remove this plug. Using a flat blade screwdriver, turn the mixture screw clockwise until it seats, then turn out 2 turns below 3000 feet or 1.5 turns above 3000 feet.

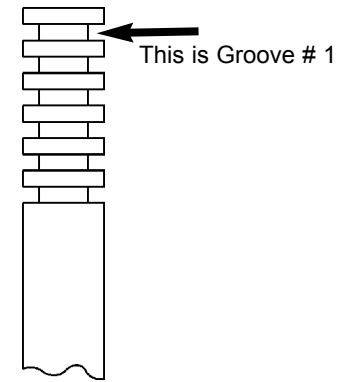


Fig.A

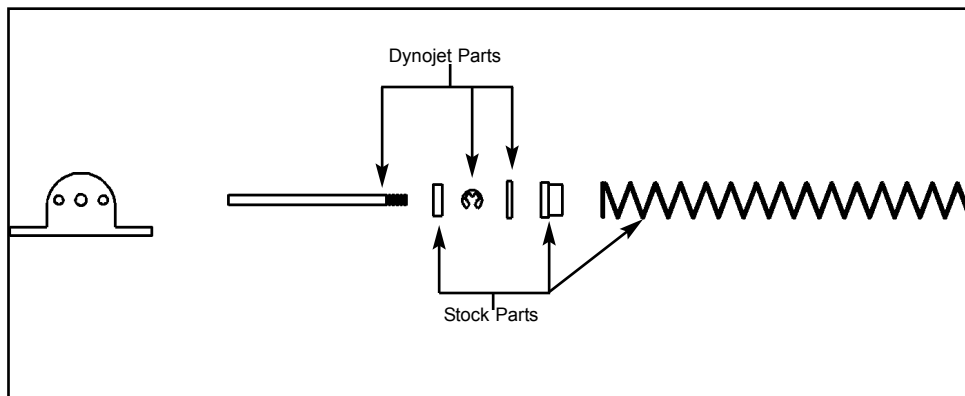
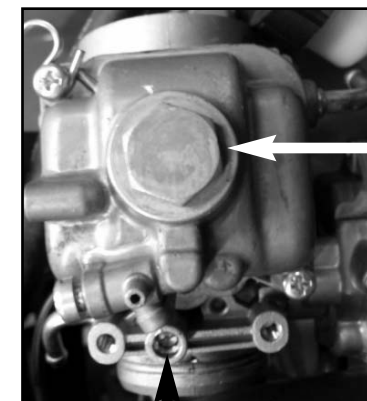


Fig.B



Remove this nut to access the main jet

Mixture Screw Plug Location