

Q621.001
2003-2009 Arctic Cat
500I Auto 4X4
Stage 1

For mildly tuned machines using the stock airbox with stock or aftermarket filter. May also be used with a good aftermarket exhaust system.

<i>Parts List</i>		
1	Main Jet	DJ134
1	Main Jet	DJ136
1	Main Jet	DJ138
1	Main Jet	DJ140
1	Main Jet	DJ142
1	Main Jet	DJ144
1	Main Jet	DJ146
1	Main Jet	DJ148
1	Main Jet	DJ150
1	Fuel Needles	DNO106
2	Adjusting Washers	DW0001
1	E-Clip	DE0001

STAGE ONE INSTRUCTIONS

1. Remove vacuum slide from carb. Remove stock needle & spacers, noting order of assembly (Fig.A).
2. Install Dynojet needle on groove #3 for applications below 5000 feet, groove #2 for above 5000 feet, using all stock spacers. Install the Dynojet washers above the E-clip (Fig.A).
3. Remove stock main jet and replace with Dynojet main jet provided. Use the DJ144 below 3000 feet, DJ140 from 3000 to 6000 feet and DJ136 above 6000 feet. When using an aftermarket exhaust with a high flow baffle, Use the DJ148 below 3000 feet, DJ144 from 3000 to 6000 feet and the DJ140 above 6000 feet. When using an aftermarket exhaust with a quiet baffle, Use the DJ146 below 3000 feet, DJ142 from 3000 to 6000 feet and the DJ138 above 6000 feet.
5. Locate the Fuel Mixture Screw (Fig.B). Using a flat blade screwdriver, turn the mixture screw clockwise until it seats, then turn out 3 turns, 2.5 turns above 5000 feet.

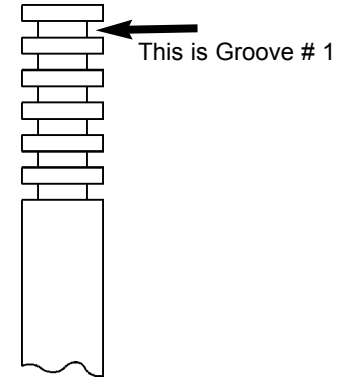


Fig.A

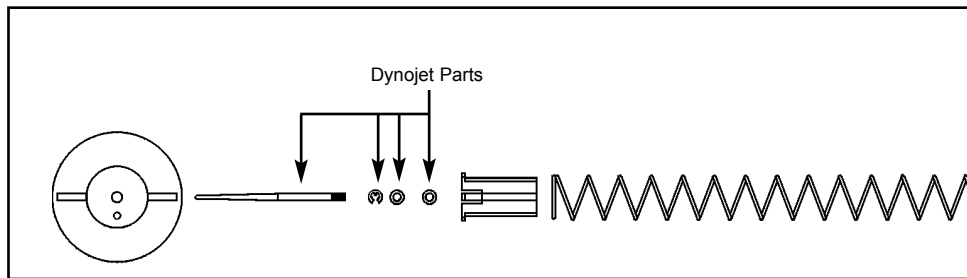


Fig.B

