

Q629.002
2005~2008 Arctic Cat
650 H1
Stage 1

For mildly tuned machines using the stock airbox with stock or aftermarket filter. May also be used with a good aftermarket exhaust system.

<i>Parts List</i>		
1	Main Jet	DJ122
1	Main Jet	DJ126
1	Main Jet	DJ130
1	Main Jet	DJ134
1	Main Jet	DJ138
1	Main Jet	DJ142
1	Main Jet	DJ146
1	Fuel Needle	DNO228
1	Slide Drill	DD 32
1	Mixture Screw Tool	DT012
2	Adjusting Washers	DW0001
1	E-Clip	DE0001

STAGE ONE INSTRUCTIONS

1. Remove vacuum slide from carb. Remove stock needle & spacers, noting order of assembly (Fig.A).
2. Install Dynojet needle on groove #4 for applications below 5000 feet, groove #3 for above 5000 feet, using all stock spacers. Install the Dynojet washers above the E-clip (Fig.A).
3. Locate the slide lift hole (Fig.A). With the slide drill provided DD 32, enlarge the slide lift hole.
4. Remove stock main jet and replace with Dynojet main jet provided. If you are using the stock exhaust, install the DJ134 below 3000 feet, DJ130 from 3000 to 6000 feet and DJ126 above 6000 feet. When using an aftermarket exhaust with a high flow baffle, use the DJ138 below 3000 feet, DJ134 from 3000 to 6000 feet and the DJ130 above 6000 feet.
5. Locate the Fuel Mixture Screw (Fig.B). Using a flat blade screwdriver, if the mixture screw has a D shaped head use the mixture screw tool DT012, turn the mixture screw clockwise until it seats, then turn out 1 turn below 5000 feet, 1/2 turn above 5000 feet.

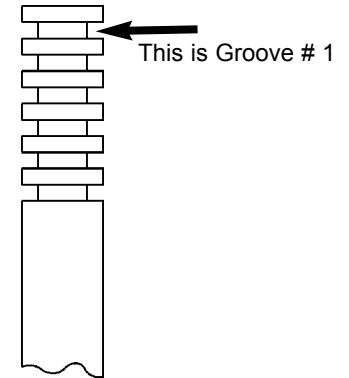


Fig.A

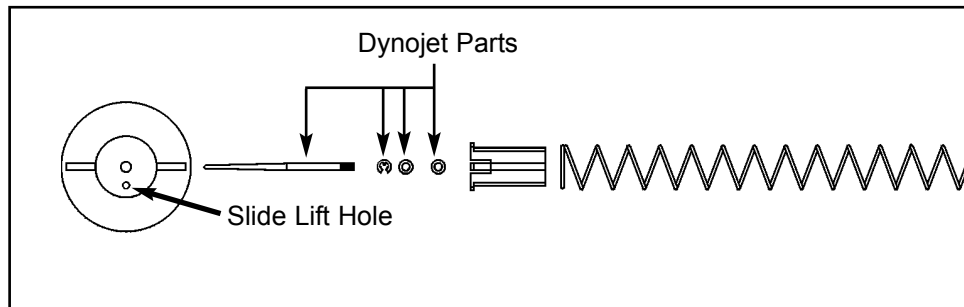


Fig.B

