

POWER COMMANDER 6

Installation Guide for: PC6-10003

Model Coverage: 2004-2009 Aprilia RSV Mille

APRILIA
DYNOJET

PARTS LIST

×

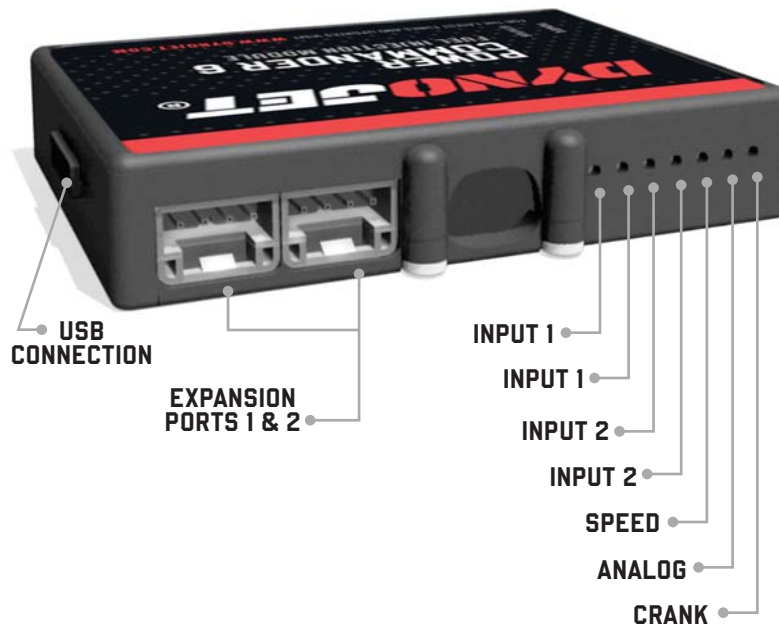
- | | |
|----------------------|--------------------------|
| 1 POWER COMMANDER 6 | 2 POWER COMMANDER DECALS |
| 1 INSTALLATION GUIDE | 4 VELCRO STRIPS |
| 1 USB CABLE | 1 ALCOHOL SWAB |
| 2 DYNOJET DECALS | 1 POSI-TAP |

**PLEASE READ ALL DIRECTIONS BEFORE STARTING INSTALLATION.
THE IGNITION MUST BE TURNED OFF BEFORE INSTALLATION.**

×

IPC6-10003.01

INPUT ACCESSORY GUIDE



OPTIONAL ACCESSORY INPUTS

- Map** (Input 1 or 2) The PC6 has the ability to hold 2 different base maps. You can switch on the fly between these two base maps when you hook up a switch to the MAP inputs. You can use any open/close type switch. The polarity of the wires is not important.
- Shifter** (Input 1 or 2) Used for clutch-less full throttle upshifts. Insert the wires from the Dynojet quick shifter into either Input 1 or Input 2. The polarity of the wires is not important. Set to Input 2 by default.
- Speed** If your application has a speed sensor then you can tap into the signal side of the sensor and run a wire into this input. This will allow you to calculate gear position in the Control Center Software. Once gear position is setup you can alter your map based on gear position and setup gear dependent kill times when using a quick shifter.
- Analog** This input is for a 0-5v signal such as engine temp, boost, etc. Once this input is established you can alter your fuel curve based on this input in the Power Core software.
- Launch** You can connect a wire to either Input 1 or Input 2 and then the other end to a switch. This switch when engaged (continuity) will only allow the RPM to be raised to a certain limit (set in the software). When released, you will have full RPM.

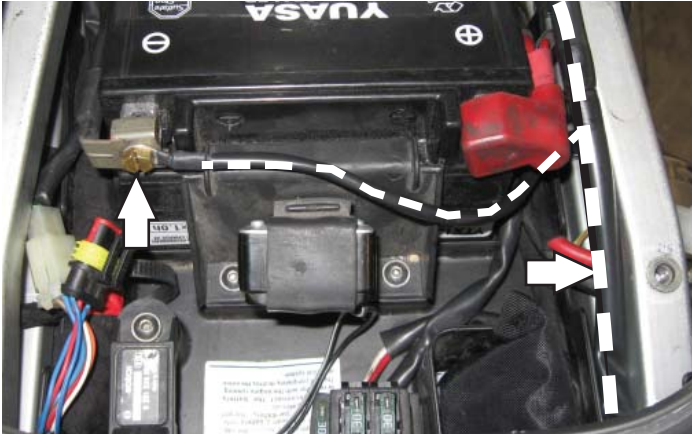
WIRE CONNECTIONS

To input wires into the PC6 first remove the rubber plug on the backside of the unit and loosen the screw for the corresponding input. Using a 22-24 gauge wire, strip about 10mm from its end. Push the wire into the hole of the PC6 until it stops and then tighten the screw. Make sure to reinstall the rubber plug.

NOTE: If you tin the wires with solder it will make inserting them easier.



INSTALLING THE POWER COMMANDER 6



- 1 Remove the seats.
- 2 Prop the front of the fuel tank up.
- 3 Lay the PC6 in the tail section and route the PC6 wiring harness forward along the right side of the frame and towards the engine.
- 4 Attach the PC6 ground wire with the small ring lug to the negative (-) terminal on the battery.



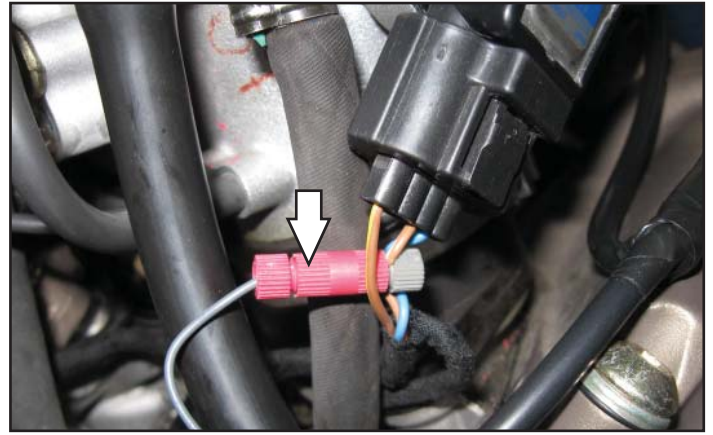
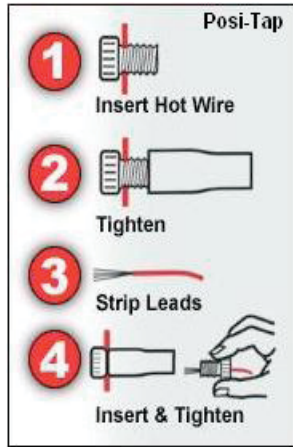
- 5 Unplug the stock wiring harness from the rear fuel injector.

This connection is on the left side of the throttle body.



- 6 Plug the pair of PC6 leads with yellow colored wires in-line of the stock wiring harness and the rear fuel injector.

- 7 Using the supplied posi-tap, attach the single grey wire from the PC6 to the stock brown/white wire from the bike's Throttle Position Sensor (TPS) wiring harness.



- 8 Route the orange colored wires from the PC6 to the right side of the throttle body.

- 9 Unplug the stock wiring harness from the front fuel injector.

This connection is on the right side of the throttle body.



- 10 Plug the pair of PC6 leads with orange colored wires in-line of the stock wiring harness and the front fuel injector.



- 11 Using the supplied Velcro, secure the PC6 module in the tail section.

Clean all surfaces with the supplied alcohol swab before applying the Velcro adhesive.

- 12 Reinstall all of the removed bodywork, the fuel tank, and the seats.



Download the latest map files from our web site at dynojet.com/tunes.



PUSH THE LIMIT

2191 MENDENHALL DRIVE, NORTH LAS VEGAS, NV 89081 - 800-992-4993 - DYNOJET.COM

© 2004-2021 DYNOJET RESEARCH ALL RIGHTS RESERVED