

POWER COMMANDER 6

Installation Guide for: PC6-14003

Model Coverage: 2007-2010 Ducati Hypermotard

HYPERMOTARD®

PARTS LIST

×

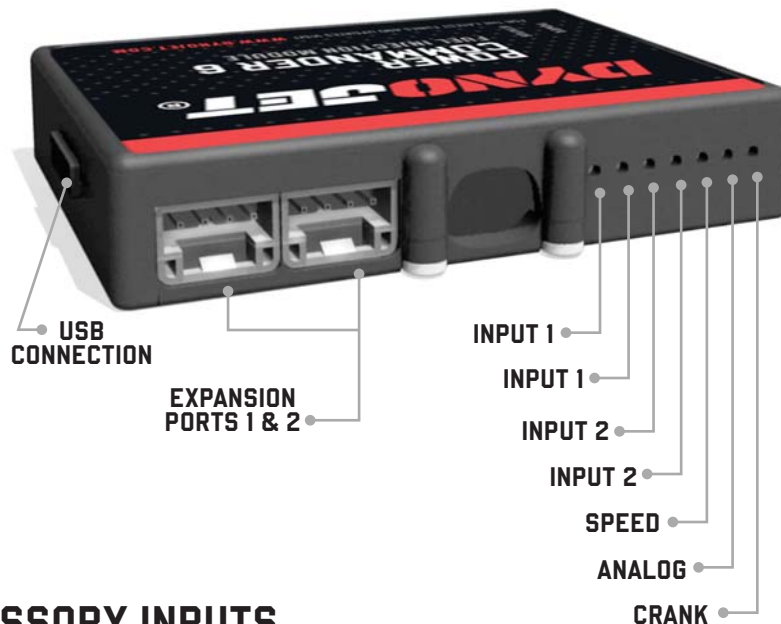
- | | | | |
|---|------------------------|---|---------------|
| 1 | POWER COMMANDER 6 | 2 | VELCRO STRIPS |
| 1 | INSTALLATION GUIDE | 1 | ALCOHOL SWAB |
| 1 | USB CABLE | 4 | ZIP TIES |
| 2 | DYNOJET DECALS | 1 | POSI-TAP |
| 2 | POWER COMMANDER DECALS | | |

**PLEASE READ ALL DIRECTIONS BEFORE STARTING INSTALLATION.
THE IGNITION MUST BE TURNED OFF BEFORE INSTALLATION.**

×

IPC6-14003.01

INPUT ACCESSORY GUIDE



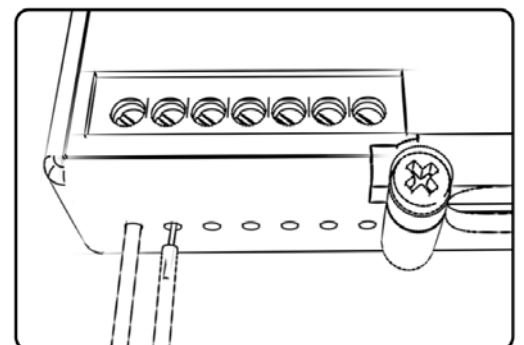
OPTIONAL ACCESSORY INPUTS

- Map** (Input 1 or 2) The PC6 has the ability to hold 2 different base maps. You can switch on the fly between these two base maps when you hook up a switch to the MAP inputs. You can use any open/close type switch. The polarity of the wires is not important.
- Shifter** (Input 1 or 2) Used for clutch-less full throttle upshifts. Insert the wires from the Dynojet quick shifter into either Input 1 or Input 2. The polarity of the wires is not important. Set to Input 2 by default.
- Speed** If your application has a speed sensor then you can tap into the signal side of the sensor and run a wire into this input. This will allow you to calculate gear position in the Control Center Software. Once gear position is setup you can alter your map based on gear position and setup gear dependent kill times when using a quick shifter.
- Analog** This input is for a 0-5v signal such as engine temp, boost, etc. Once this input is established you can alter your fuel curve based on this input in the Power Core software.
- Launch** You can connect a wire to either Input 1 or Input 2 and then the other end to a switch. This switch when engaged (continuity) will only allow the RPM to be raised to a certain limit (set in the software). When released, you will have full RPM.

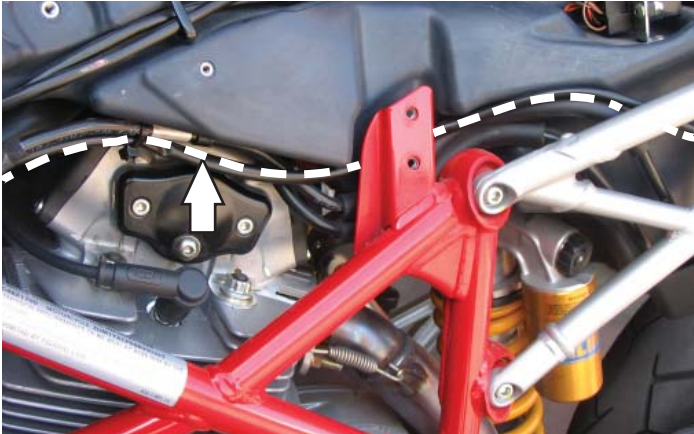
WIRE CONNECTIONS

To input wires into the PC6 first remove the rubber plug on the backside of the unit and loosen the screw for the corresponding input. Using a 22-24 gauge wire, strip about 10mm from its end. Push the wire into the hole of the PC6 until it stops and then tighten the screw. Make sure to reinstall the rubber plug.

NOTE: If you tin the wires with solder it will make inserting them easier.



INSTALLING THE POWER COMMANDER 6



- 1 Remove the seat.
- 2 Remove the side panels.
- 3 Lay the PC6 near the battery and route the harness down the left hand side of the bike.

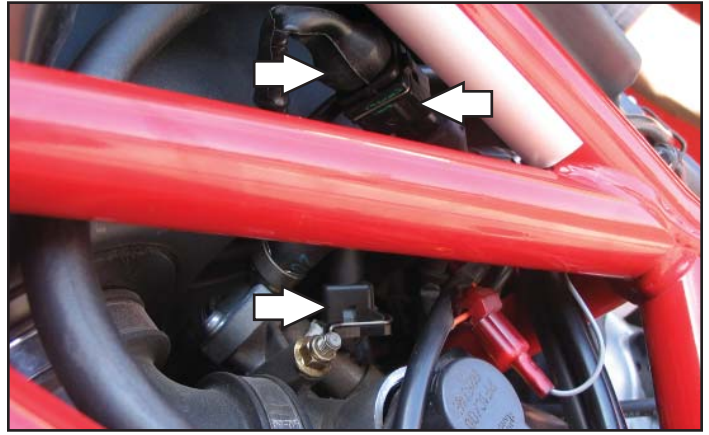


- 4 Continue routing the PC6 harness along the left hand frame rail.
- 5 Route the pair of PC6 leads with ORANGE colored wires to the right side of the bike following the frame cross member.

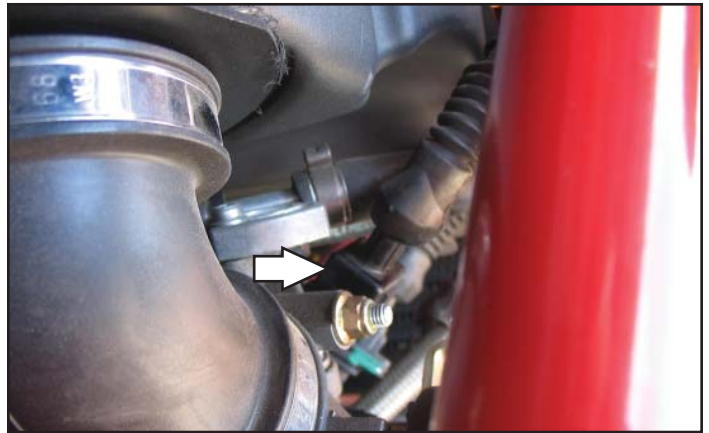


- 6 Unplug the stock wiring harness from the rear fuel injector.
This injector is located on the left hand side of the bike.

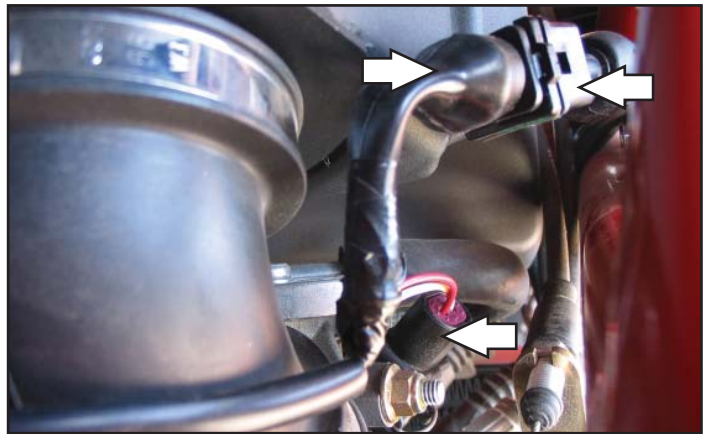
- 7 Plug the pair of PC6 leads with YELLOW colored wires in-line of the rear fuel injector and the stock wiring harness.



- 8 Unplug the stock wiring harness from the front fuel injector.
This injector is located on the right hand side of the bike.

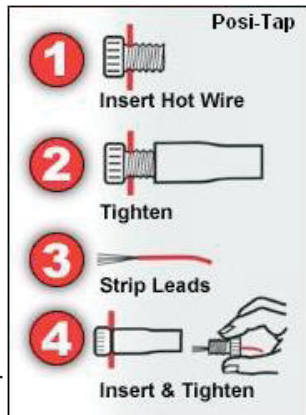


- 9 Plug the pair of PC6 leads with ORANGE colored wires in-line of the front fuel injector and the stock wiring harness.



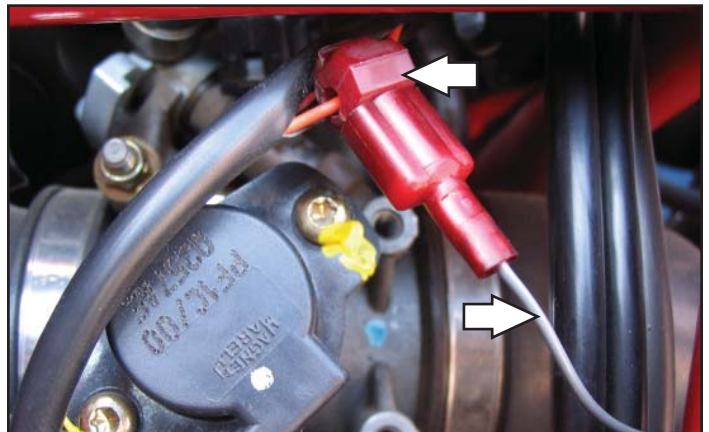
- 10 Locate the stock Throttle Position Sensor (TPS). This sensor is located on the left side of the throttle bodies.

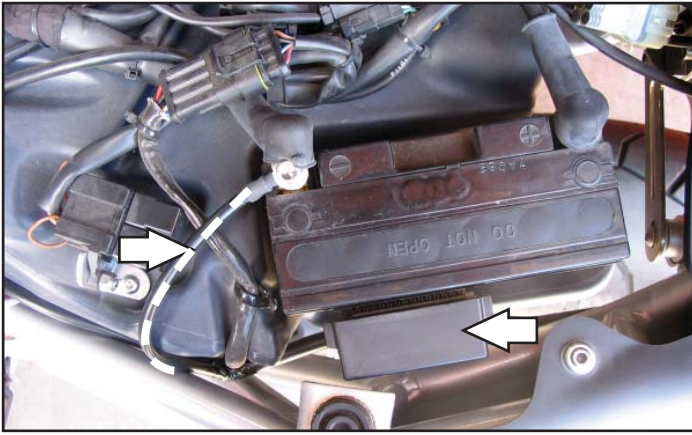
- 11 Cut a 1-inch slit in the sheathing for the stock TPS wiring harness. This allows access to the internal wires.



- 12 Using the supplied posi-tap, attach the PC6 GREY wire to the stock ORANGE wire of the bike's TPS.

The wire tap shown is not a posi-tap; this is an older crimp-on style wire tap.





- 13 Attach the ground wire from the PC6 harness with the small ring lug to the negative (-) terminal of the bike's battery.
- 14 Using the supplied Velcro, install the PC6 to the side of the battery.
Make sure to clean both surfaces with the alcohol swab before attaching.
- 15 Using the supplied zip-ties, secure the PC6 wiring harness where necessary to keep the harness free and clear of any hot or moving parts.
- 16 Reinstall the side panels and the seat.

Download the latest map files from our web site at dynojet.com/tunes.



PUSH THE LIMIT

2191 MENDENHALL DRIVE, NORTH LAS VEGAS, NV 89081 - 800-992-4993 - DYNOJET.COM

© 2007-2022 DYNOJET RESEARCH ALL RIGHTS RESERVED